



## WELDING ANCILLARY PRODUCTS



(+90) 444 93 53  
magmaweld.com  
info@magmaweld.com

 (+90) 538 927 12 62



## CORPORATE

**Magmaweld** is a manufacturer of Stick Electrodes, MIG/MAG & TIG Wires, Flux Cored Wires, Submerged-Arc Wires and Fluxes, Welding Machines, Welding Ancillary Products and Automation Systems in Turkey. Oerlikon Kaynak Elektrodları ve Sanayi A.Ş. was founded in 1957 in order to manufacture stick electrodes as a licensee of Oerlikon-Buehrle AG.

In the year 1996, in order to reduce costs, to strengthen the leading position in Turkey and turn Magmaweld into a global brand, two old factories in Istanbul were moved to new, state of the art factory in Manisa, situated in the west of Turkey. In 2010 the second factory has been opened also in Manisa to produce high-tech welding equipment as well as to integrate robotic automation systems.

The MAGMAWELD brand came out as an analogy between the molten core of the earth, the MAGMA and the WELDPPOOL.

Magmaweld greatly values technical education and has been contributing to the training and education of thousands of welders through regular, free of charge courses since 1961. This service helps to increase consumer awareness and technical competence throughout the industry.

Magmaweld strives for customer satisfaction and process excellence. In order to satisfy customer needs, all questions and remarks about products, training, welding technologies, welding procedures, standards, work safety and automation are processed through the call center at +90 444WELD (4449353) or through live support from [www.magmaweld.com](http://www.magmaweld.com) where the relevant information is directed to Magmaweld's experts.



Welding Consumables Factory  
Organize Sanayi Bölgesi 2. Kısım, Manisa, Turkey



Welding Machines and Automation Factory  
Organize Sanayi Bölgesi 5. Kısım, Manisa, Turkey

## CONTENTS

### OHS - OCCUPATIONAL HEALTH AND SAFETY PRODUCTS

Welding Masks	1
Welding Gloves	9

### WELDING FUME EXTRACTION AND FILTRATION SYSTEMS

Mobile Models	11
Fixed Models	13
Compact Mobile Units	15
Mobile Fan Systems	16
Welding Fume Filtration Tables	17

### WORKSHOP EQUIPMENTS

Welding Hammers	19
Welding Tables	20

### ABRASIVE PRODUCTS

Cut Off Discs	21
Grinding Discs	22
Flap Discs	22

### WELDING CHEMICALS

Welding Spray	23
Protective Welding Paste	23
Anti Spatter	23
Coolant	24
Inox Paste	24

CERAMIC BACKINGS	25
------------------	----

CARBON CUTTING AND GOUGING ELECTRODES	26
---------------------------------------	----

## TORCHES

MIG / MAG Torches and Accessories	27
TIG Torches and Accessories	29

## ELECTRODE AND WELDING FLUX DRYING OVENS

Electrode Drying Ovens	31
Welding Flux Drying Ovens	37



## OHS - OCCUPATIONAL HEALTH AND SAFETY PRODUCTS

### Welding Masks - MKM 720S

MKM 720S auto darkening welding mask offers maximum safety and eye care with the cartridges which are extremely sensitive and effective against powerful welding light.

Allows wider observation thanks to **100 x 60 mm** viewing area in line with EN 379 standards.



Provides extreme protection with ultra fast (**1/30000 sec**) switching capability.

With **external control unit** Sensivity, Delay, 5-8 / 9-13 Darkening control and Grinding mode adjustments can be easily done.

Offers options for choosing **5-8 / 9-13** darkening levels in case of low light and low amperage applications such as TIG Welding.



High quality **inner and outer lenses** provides more clear view.

Provides **ergonomic and comfortable** use due to durable, light weighted, flexible structure and EN 175 standards.



**6 point adjustable** headgear makes welder feel the helmet balanced and lighter thanks to ergonomic structure for all head types.



Offers superior clear vision for welding application area due to **True Color** technology.

## Welding Masks - MKM 720S

### Applications:

Submerged Arc Welding (SAW), Inert Gas Welding MIG/MAG (GMAW), Flux Cored Wire Arc Welding (FCAW), TIG Welding (GTAW), Carbon Arc Welding (CAW), Plasma Arc (PATI), Grinding



Technical Details	MKM 720S
Optical Class	1/1/1/2
Field Of View	100 x 60 mm
Cartridge Sizes	110.00 x 90.00 x 9.00 mm
Shade Degrees	DIN 5 - 8 / 9 - 13
Darkening Control	External, Variable shade
Sensors	4
Start/Stop	Automatic
Power Source	Solar Power, Changeable Battery
Reaction Time	1 / 30,000 s. (From Light To Darkness)
Delay Time	0.10 ~ 1.00 s. (Variable Potency Button)
Operating Sensitivity	≥ 5 A (DC); ≥ 5A (AC)
Operating Temperature	- 10 °C ~ + 60 °C
Storage Temperatures	- 20 °C ~ + 70 °C
Weight (Net)	515 gr.
Product Code	8500405720

Spare Parts		
No.	Product Name	Product Code
1	Outer Lens	8501304020
2	MKM Cartridge	8501LCD720
3	Inner Lens	85010718IC
4	Head Gear	8501405BAS
5	Screw	8501304015
6	Helmet	8500405003
7	Lens Holder	8501304019

### Welding Masks - MKM 620MA

MKM 620MA auto darkening welding mask has been designed to focus on comfort and eye care with using highly excellent cartridges.

Allows wider observation thanks to **100 x 45 mm** viewing area in line with EN 379 standards.



Offers options for adjusting sensivity and delay features by the control buttons on cartridge.

Provides extreme protection with ultra fast (**1/30000 sec**) switching capability.

With external control unit Sensivity, Delay, 9-13 Darkening control and Grinding mode adjustments can be easily done.

Provides **ergonomic and comfortable** use due to durable, light weighted, flexible structure and EN 175 standards.



High quality **inner and outer lenses** provides more clear view.



**6 point adjustable** headgear makes welder feel the helmet balanced and lighter thanks to ergonomic structure for all head types.



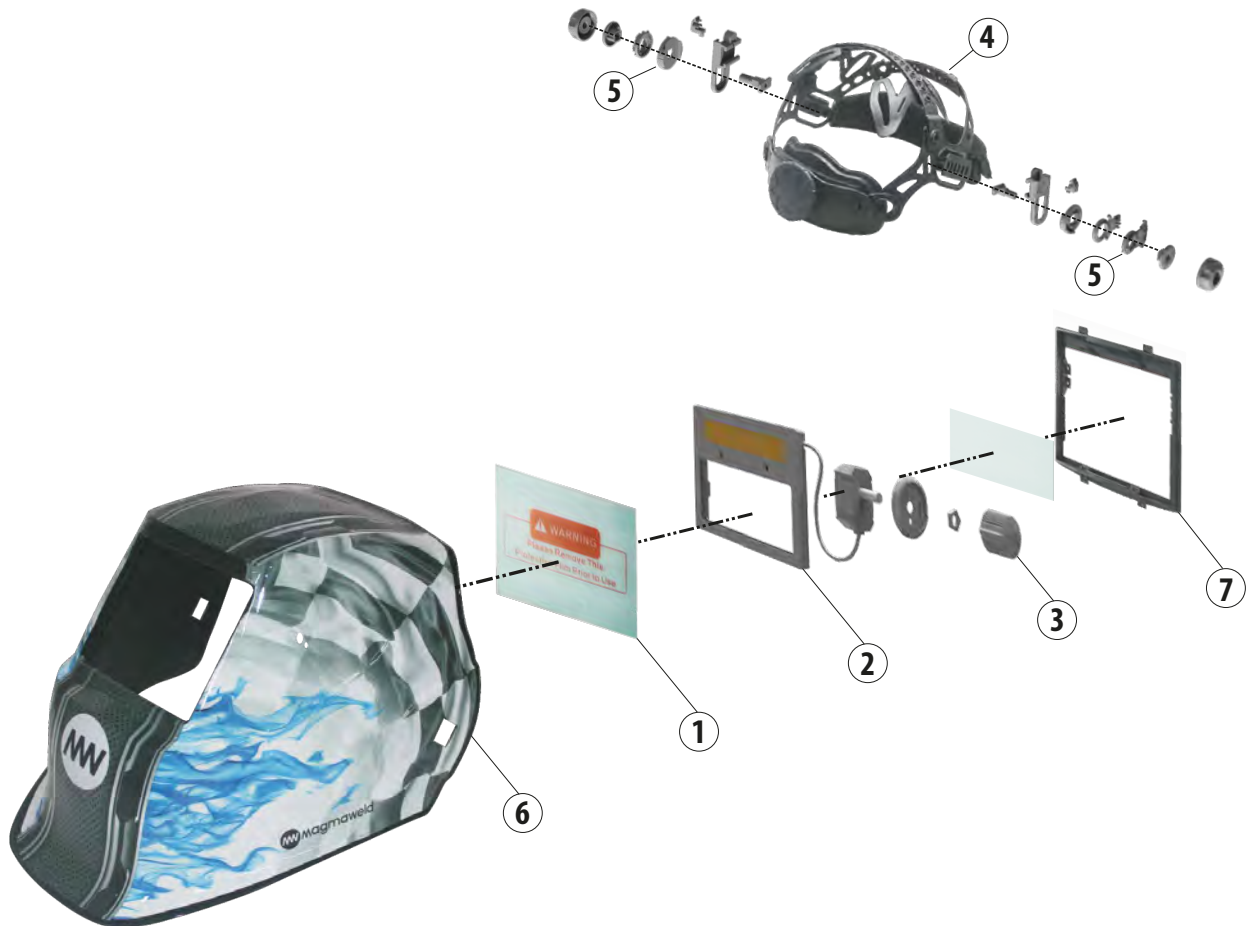
Offers superior clear vision for welding application area due to **True Color** technology.



## Welding Masks - MKM 620MA

### Applications:

Submerged Arc Welding (SAW), Inert Gas Welding MIG/MAG (GMAW), Flux Cored Wire Arc Welding (FCAW), TIG Welding (GTAW), Carbon Arc Welding (CAW), Plasma Arc (PATI), Grinding



Technical Details	MKM 620MA
Optical Class	1/1/1/2
Field Of View	100 x 45 mm
Cartridge Sizes	110.00 x 90.00 x 9.00 mm
Shade Degrees	DIN 4 / 9 - 13
Darkening Control	External, Variable shade
Sensors	4
Start/Stop	Automatic
Power Source	Solar Power, Changeable Battery
Reaction Time	1 / 30,000 s. (From Light To Darkness)
Delay Time	0.10 ~ 1.00 s. (Variable Potency Button)
Operating Sensitivity	$\geq 10$ A(DC) ; $\geq 10$ A(AC)
Operating Temperature	- 10 °C ~ + 60 °C
Storage Temperatures	- 20 °C ~ + 70 °C
Weight (Net)	525 gr.
Product Code	8500405620

Spare Parts		
No.	Product Name	Product Code
1	Outer Lens	8501304020
2	MKM Cartridge	8501LCD620
3	Inner Lens	85010616IC
4	Head Gear	8501405BAS
5	Screw	8501304015
6	Helmet	8500405004
7	Lens Holder	8501304018

## OHS - OCCUPATIONAL HEALTH AND SAFETY PRODUCTS

### Welding Masks - MKM 620S

MKM 620MA auto darkening welding mask has been designed to focus on comfort and eye care with using highly excellent cartridges.

Allows wider observation thanks to **100 x 45 mm** viewing area in line with EN 379 standards.



Offers options for adjusting sensivity and delay features by the control buttons on cartridge.

Provides extreme protection with ultra fast (**1/30000 sec**) switching capability.

With external control unit Sensivity, Delay, 9-13 Darkening control and Grinding mode adjustments can be easily done.

Provides **ergonomic and comfortable** use due to durable, light weighted, flexible structure and EN 175 standards.



High quality **inner and outer lenses** provides more clear view.



**6 point adjustable** headgear makes welder feel the helmet balanced and lighter thanks to ergonomic structure for all head types.

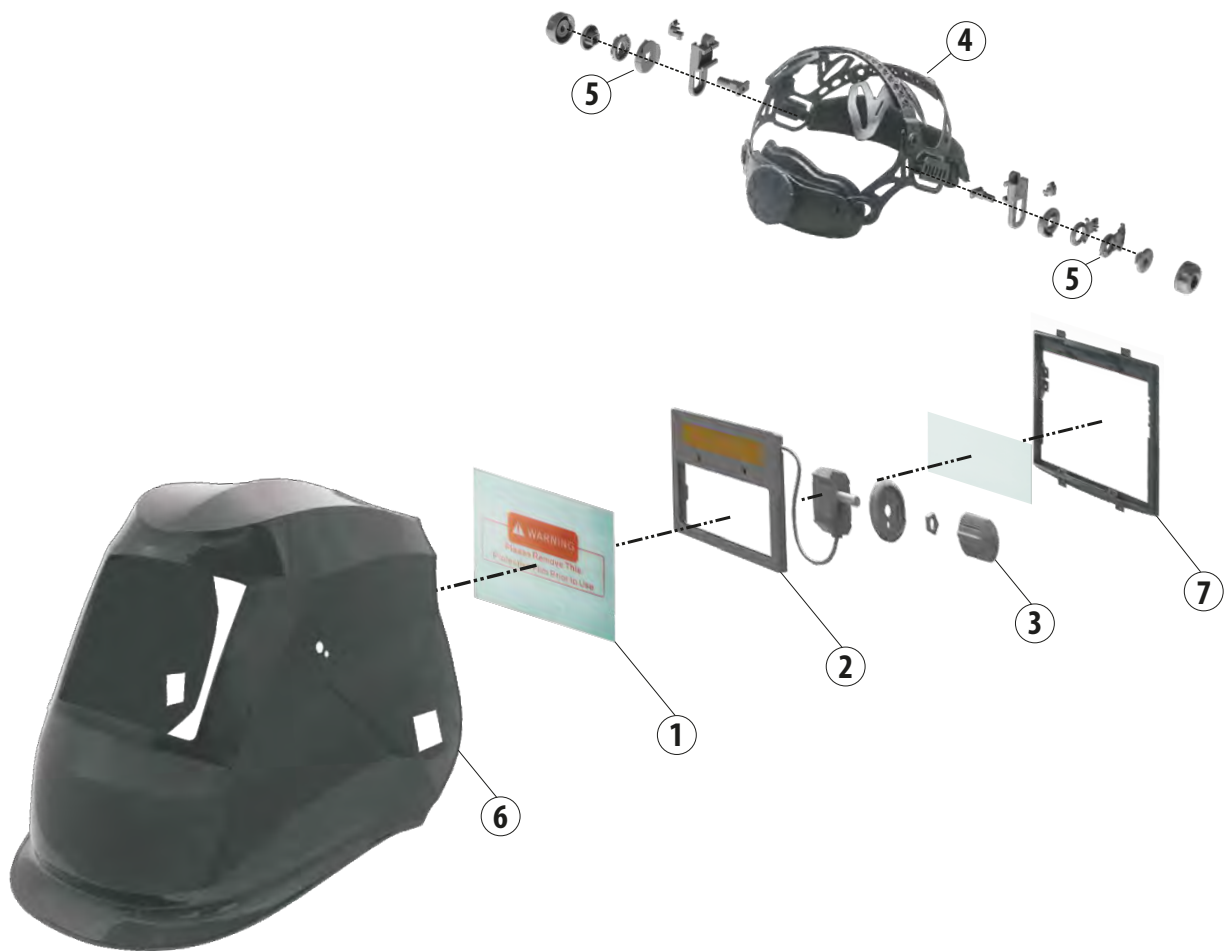


Offers superior clear vision for welding application area due to **True Color** technology.

## Welding Masks - MKM 620S

### Applications:

Submerged Arc Welding (SAW), Inert Gas Welding MIG/MAG (GMAW), Flux Cored Wire Arc Welding (FCAW), TIG Welding (GTAW), Carbon Arc Welding (CAW), Plasma Arc (PATI), Grinding



Technical Details	MKM 620S
Optical Class	1/1/1/2
Field Of View	100 x 45 mm
Cartridge Sizes	110.00 x 90.00 x 9.00 mm
Shade Degrees	DIN 4 / 9 - 13
Darkening Control	External, Variable shade
Sensors	4
Start/Stop	Automatic
Power Source	Solar Power, Changeable Battery
Reaction Time	1 / 30,000 s. (From Light To Darkness)
Delay Time	0.10 ~ 1.00 s. (Variable Potency Button)
Operating Sensitivity	$\geq 10$ A(DC) ; $\geq 10$ A(AC)
Operating Temperature	- 10 °C ~ + 60 °C
Storage Temperatures	- 20 °C ~ + 70 °C
Weight (Net)	525 gr.
Product Code	8500405619

Spare Parts		
No.	Product Name	Product Code
1	Outer Lens	8501304020
2	MKM Cartridge	8501LCD619
3	Inner Lens	85010616IC
4	Head Gear	8501405BAS
5	Screw	8501304015
6	Helmet	8500405001
7	Lens Holder	8501304018

OHS - OCCUPATIONAL HEALTH AND SAFETY PRODUCTS

Welding Masks - MKM Series

Magmaweld auto darkening welding masks fulfill your expectations whithin price/performance ratio.



MKM 720S



MKM 620MA



MKM 620S



Models	MKM 720S	MKM 620MA	MKM 620S
Product Code	8500405720	8500405620	8500405619





### Welding Gloves



#### TIG B200



Designed to meet the expectations of welders in heavy TIG applications of Lighting, Automotive, Food, Industrial Kitchen, Domestic Appliances sectors. TIG B200 glove allows maximum control and sense of touching thanks to its Supersoft design and soft structure. TIG B200 glove provides maximum protection due to its heat resistance.



EN 420 + A1



EN 388 + A1



3121X

EN 407  
EN 12477/A1 Type B



21XX4X

- High resistant and nonflamable stitches thanks to DUPONT® Kevlar yarn.
- %100 cotton lining provides continuous and comfortable use.
- Long sleeves are designed in accordance with the standards.
- Tested and approved according to EN 12477: 2016 standard.

### Welding Gloves



#### MIG 300



Designed to answer all needs of welders in heavy welding duty welding applications in sectors such as Automotive, steel construction, Shipyards etc. MIG 300 is superior to similar products thanks to its cut resistance and its resistant structure. Top level heat resistance and resistance to small splashes, provides maximum safety even working with the high amperage welding operations. High tensile abrasion resistance with the reinforced palm. Allows long term welding activity to welders thanks to its comfort.



EN 420 + A1



EN 388 + A1



4343A

EN 407  
EN 12477/A1 Type A



413X4X

- High resistant and nonflamable stitches thanks to DUPONT® Kevlar yarn.
- %100 cotton lining provides continuous and comfortable use.
- It offers superior performance and comfort with palm reinforcement in ergonomic reinforced design.
- Long sleeves are designed in accordance with the standards.
- Tested and approved according to EN 12477: 2016 standard.

## WELDING FUME EXTRACTION AND FILTRATION SYSTEMS

**DFS 1M, DFS 2M**  
**DFS 1MK, DFS 2MK**

Mobile Models

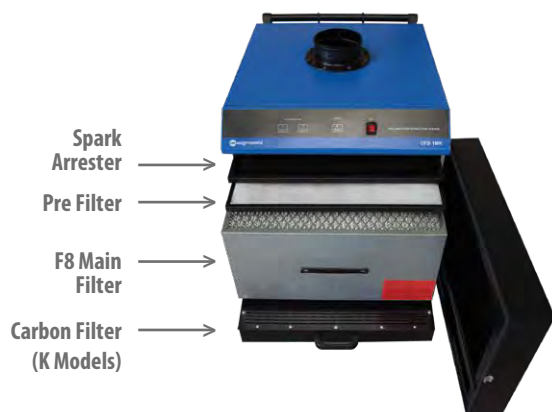


**DFS 1M**

**Two Arm Model**  
**DFS 2M**

- Operates with 3 Phase 380V/50-60Hz
- 99% efficient cleaning of welding fume with F8 Filter.
- Aluminium mesh filter for prefiltering and spark arresting.
- Filter change indicator for filter efficiency.
- Reversed phase control lamp.
- 3 m supply cable is provided as standart.
- Acrobat arms can be selected as 2 m, 3 m and 4 m.
- Optional lighting can be attached.
- Carbon filter can be selected for advanced applications.

## WELDING FUME EXTRACTION AND FILTRATION SYSTEMS



DFS 1M

DFS 2M

DFS 1MK

DFS 2MK

	DFS 1M DFS 1MK	DFS 2M DFS 2MK
Mains Voltage	380 V - 50 / 60 Hz	380 V - 50 / 60 Hz
Filtering Efficiency	> 99%	> 99%
Motor Power	1,1 kW / 1,5 kW (K model)	1,5 kW
Suction Capacity	3000 m³ / h	2800 m³ / h
Suction Capacity (For K Models)	2800 m³ / h	2600 m³ / h
Noise Level	72 dB (A)	72 dB (A)
Dimensions (l x w x h)	650 x 750 x 1050 mm	650 x 750 x 1050 mm
Dimensions (for K Models) (l x w x h)	650 x 750 x 1200 mm	650 x 750 x 1200 mm
Weight	96 kg	108 kg
Weight (for K Models)	115 kg	115 kg

### Product Codes

DFS 1M / DFS 2M (with 2 m arm)	8411145M12	8411445M12
DFS 1M / DFS 2M (with 3 m arm)	8411145M13	8411445M13
DFS 1M / DFS 2M (with 4 m arm)	8411145M14	8411445M14
DFS 1MK / DFS 2MK (with 2 m arm)	8411245M12	8411545M12
DFS 1MK / DFS 2MK (with 3 m arm)	8411245M13	8411545M13
DFS 1MK / DFS 2MK (with 4 m arm)	8411245M14	8411545M14

### Consumables and Optional Accessories

Pre Filter	8490000301	8490000301
Main Filter	8490000603	8490000603
Carbon Filter (For K Models)	8490000200	8490000200
Lighting 3 m (Optional)	8421000103	8421000103

## WELDING FUME EXTRACTION AND FILTRATION SYSTEMS

### DFS 1S, DFS 2S DFS 1SK, DFS 2SK

Fixed Models



**One Arm Model**  
**DFS 1S**

**Two Arm Model**  
**DFS 2S**

- Operates with 3 Phase 380V/50-60Hz
- 99% efficient cleaning of welding fume with F8 Filter.
- Aluminium mesh filter for prefiltering and spark arresting.
- Filter change indicator for filter efficiency.
- Reversed phase control lamp.
- 3 m supply cable is provided as standart.
- Acrobat arms can be selected as 2 m, 3 m and 4 m.
- Optional lighting can be attached.
- Carbon filter can be selected fir advanced applications.



# WELDING FUME EXTRACTION AND FILTRATION SYSTEMS



	DFS 1S DFS 1SK	DFS 2S DFS 2SK
Mains Voltage	380 V - 50 / 60 Hz	380 V - 50 / 60 Hz
Filtering Efficiency	> 99%	> 99%
Motor Power	1,1 kW / 1,5 kW (K model)	1,5 kW
Suction Capacity	3000 m³ / h	2800 m³ / h
Suction Capacity (For K Models)	2800 m³ / h	2600 m³ / h
Noise Level	72 dB (A)	72 dB (A)
Dimensions (l x w x h)	655 x 755 x 935 mm	655 x 755 x 935 mm
Dimensions (for K Models) (l x w x h)	655 x 755 x 1085 mm	655 x 755 x 1085 mm
Weight	90 kg	90 kg
Weight (for K Models)	110 kg	110 kg

Product Codes		
DFS 1S / DFS 2S (with 2 m arm)	8412145M12	8412445M12
DFS 1S / DFS 2S (with 3 m arm)	8412145M13	8412445M13
DFS 1S / DFS 2S (with 4 m arm)	8412145M14	8412445M14
DFS 1SK / DFS 2SK (with 2 m arm)	8412245M12	8412545M12
DFS 1SK / DFS 2SK (with 3 m arm)	8412245M13	8412545M13
DFS 1SK / DFS 2SK (with 4 m arm)	8412245M14	8412545M14

Consumables and Optional Accessories		
Pre Filter	8490000301	8490000301
Main Filter	8490000603	8490000603
Carbon Filter (For K Models)	8490000200	8490000200
Lighting 3 m (Optional)	8421000303	8421000303

DFS MP

Compact Mobile Units



- Operates with 1 Phase 220V/50Hz
- **2 m** Acrobat arm.
- Provides high performance and low energy consumption rate.
- 99% efficient cleaning of welding fume with F8 Filter.
- **Carbon Filter** can be attached for advanced applications.
- Aluminium mesh filter for prefiltering and spark arresting.
- Filter change indicator for filter efficiency.
- Operation control lamp.
- Optional **HEPA** filter can be attached.

Technical Specifications	Unit	Data
Mains Voltage	230	V
Rated Power	0,35	kW
Suction Capacity	850	m <sup>3</sup> / Hour
Noise Level	65	dB (A)
Filter Efficiency	99	%
Dimensions (l x w x h)	480 x 480 x 820	mm
Weight	49	Kg
Product Code	8411325M12	

## WELDING FUME EXTRACTION AND FILTRATION SYSTEMS

### DES MS

#### Mobile Fan System



### DES SS

#### Fixed Fan System



- Operates with 3 Phase 380V/50-60Hz
- Mobile Fan Systems are especially used in arrow and enclosed environments. 5 m suction hose provided as standart. Outlet hose can be selected up to 15 m. Magnet support allows hood to fix anywhere requested.
- Fixed Fan Systems especially used in multiple welding cabins. Fixed fans are generally attached to local wentilation systems. Acrobat arms can be selected as **2 m, 3 m and 4 m**.
- Optional lighting can be attached. (DES SS models)

		DES MS	DES SS
Mains Voltage		380 V - 50 / 60 Hz	380 V - 50 / 60 Hz
Motor Power		1,1 kW	1,1 kW / 1,5 kW
Suction Capacity		3000 m <sup>3</sup> / h	3000 m <sup>3</sup> / h
Noise Level		69 dB (A)	69 dB (A)
Dimensions (l x w x h)		650 x 500 x 250 mm	650 x 500 x 250 mm
Weight		40 kg	37 kg
Product Code (DES MS)	Main Unit	8413145M00	-
	5 m Outlet Hose	8413145M45	-
	10 m Outlet Hose	8413145M46	-
	15 m Outlet Hose	8413145M47	-
Product Code (DES SS)	1.1 kW (2 m)	-	8414145M12
	1.1 kW (3 m)	-	8414145M13
	1.1 kW (4 m)	-	8414145M14
	1.5 kW (2 m)	-	8414245M12
	1.5 kW (3 m)	-	8414245M13
	1.5 kW (4 m)	-	8414245M14
<b>Optional Accessories</b>			
Lighting (2 m)		-	8421000502
Lighting (3 m)		-	8421000503
Lighting (4 m)		-	8421000504

## WELDING FUME EXTRACTION AND FILTRATION SYSTEMS

### Welding Fume Filtration Tables

DFM 1000

DFM 1250

DFM 1500



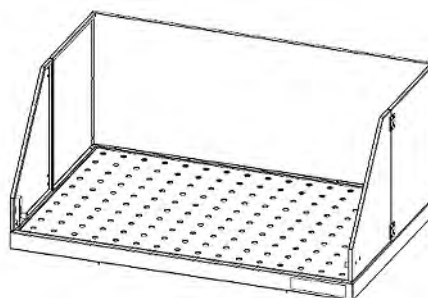
DFM units are used for filtering welding fume and welding dust. Designed for filtering welding fume of the workpieces which are not cover up welding tray and smaller height than 15 centimeter. DFM units can be used with variable tray dimensions and cover options.

- Offers effective solution for welding fume.
- 99% efficient cleaning of welding fume with F8 Filter.
- Aluminium spark arrester.
- Filter change indicator for filter efficiency.
- Reversed phase control lamp.
- 3 m energy cable is standart.
- Optional cover set can be attached.



## WELDING FUME EXTRACTION AND FILTRATION SYSTEMS

Technical Specifications	Unit	Data
Mains Voltage	380 / 50 - 60 Hz	V
Rated Power	1.5	kW
Suction Capacity	3000	m <sup>3</sup> / saat
Noise Level	72	dB (A)
Filter Efficiency	99	%
Dimensions (l x w x h)	650 x 750 x 1015	mm
Weight	96	Kg



Product Code	Model	Dimensions	Visor Set	Plexy Visor Set
8415245M00	<b>DFM 1000</b>	1000 x 400 mm	843110M400	843110M401
		1000 x 650 mm	843110M650	843110M651
8415345M00	<b>DFM 1250</b>	1250 x 400 mm	843125M400	843125M401
		1250 x 650 mm	843125M650	843125M651
8415445M00	<b>DFM 1500</b>	1500 x 400 mm	843150M400	843150M401
		1500 x 650 mm	843150M650	843150M651



### Welding Hammers



Magmaweld welding hammers are available as 300 gr, 500 gr spiral handle and 500 gr flat handle options.



Magmaweld welding hammers offer 3 different ergonomoy options for the welding applications which require power and precision. Magmaweld welding hammers are ideal workshop tools to remove welding slug.

### Welding Tables with Cover



- Working table dimensions 550 x 800 x 800 mm (l x w x h).
- Visor Set dimensions 550 x 800 x 680 mm (l x w x h).
- Modular protective panels that refract light during welding.
- Wheel structure and locking wheels for easy movement capability.
- Folding feature for functional use.
- Ideal for welding and grinding applications.

#### Technical Specifications

Dimensions (l x w x h)	1480 x 800 x 550 mm
Weight	50 kg
Product Code	8300000500

## ABRASIVE PRODUCTS



### Cut Off Discs MAGMACUT



**MAGMACUT** cut off discs are suitable for production of welded manufacturing, thin sheet metals, profiles, pipes and all structural steels (ST 37, 42, 52). It offers long lasting and fast clipping in cutting operations with its durable structure.



Product Code	Category		Dimensions		Quality	Rotation	Box Qty.	Inner Box Qty.
813M111521	Flat	T41	115 x 2,5 x 22,23	4 1/2" x 3/32" x 7/8"	A 30 R BF	max. 13300 rpm	50	400
813M111522	Dished	T42	115 x 2,5 x 22,23	4 1/2" x 3/32" x 7/8"	A 30 R BF	max. 13300 rpm	50	400
813M111531	Flat	T41	115 x 3,0 x 22,23	4 1/2" x 1/8" x 7/8"	A 30 R BF	max. 13300 rpm	50	200
813M111532	Dished	T42	115 x 3,0 x 22,23	4 1/2" x 1/8" x 7/8"	A 30 R BF	max. 13300 rpm	50	200
813M112521	Flat	T41	125 x 2,5 x 22,23	5" x 3/32" x 7/8"	A 30 R BF	max. 12250 rpm	50	400
813M112522	Dished	T42	125 x 2,5 x 22,23	5" x 3/32" x 7/8"	A 30 R BF	max. 12250 rpm	50	400
813M112531	Flat	T41	125 x 3,0 x 22,23	5" x 1/8" x 7/8"	A 30 R BF	max. 12250 rpm	50	200
813M112532	Dished	T42	125 x 3,0 x 22,23	5" x 1/8" x 7/8"	A 30 R BF	max. 12250 rpm	50	200
813M118031	Flat	T41	180 x 3,0 x 22,23	7" x 1/8" x 7/8"	A 30 R BF	max. 8500 rpm	25	150
813M118032	Dished	T42	180 x 3,0 x 22,23	7" x 1/8" x 7/8"	A 30 R BF	max. 8500 rpm	25	150
813M123031	Flat	T41	230 x 3,0 x 22,23	9" x 1/8" x 7/8"	A 30 R BF	max. 6650 rpm	25	100
813M123032	Dished	T42	230 x 3,0 x 22,23	9" x 1/8" x 7/8"	A 30 R BF	max. 6650 rpm	25	100
813M123021	Flat	T41	230 x 2,5 x 22,23	9" x 3/32" x 7/8"	A 30 R BF	max. 6650 rpm	25	100
813M123022	Dished	T42	230 x 2,5 x 22,23	9" x 3/32" x 7/8"	A 30 R BF	max. 6650 rpm	25	100
813M111511	Flat	T41	115 x 1,0 x 22,23	4 1/2" x 1/25" x 7/8"	INOX A 60 T BF	max. 13300 rpm	25	400

### Cut Off Discs MAGMACUT



**MAGMACUT INOX PRO** is suitable for cutting processes of thin stainless steel (inox) sheets, pipes and sheet bars. The product with special grains and hard structure is effective in the cutting process of stainless materials.



Product Code	Category		Dimensions		Quality	Rotation	Box Qty.	Inner Box Qty.
813MP11511	Flat	T41	115 x 1,0 x 22,23	4 1/2" x 1/25" x 7/8"	INOX PRO A 60 T BF	max. 13300 rpm	25	400
813MP12511	Flat	T41	125 x 1,0 x 22,23	5" x 1/25" x 7/8"	INOX PRO A 60 T BF	max. 12250 rpm	25	400
813MP18016	Flat	T41	180 x 1,6 x 22,23	7" x 1/16" x 7/8"	INOX PRO A 60 T BF	max. 8500 rpm	40	320
813MP23019	Flat	T41	230 x 1,9 x 22,23	9" x 1/13" x 7/8"	INOX PRO A 60 T BF	max. 6650 rpm	30	120





## ABRASIVE PRODUCTS



### Grinding Discs MAGMAGRIND



**MAGMAGRIND** grinding discs provide efficient grinding operation on welding seams, low and high alloy steels, hard and soft steels and stainless-steel materials.



Product Code	Category	Dimensions		Quality	Rotation	Box Qty.	Inner Box Qty.
813M211567	T27	115 x 6,0 x 22,23	4 1/2" x 1/4" x 7/8"	A 24 R BF	max. 13300 rpm	25	100
813M212567	T27	125 x 6,0 x 22,23	5" x 1/4" x 7/8"	A 24 R BF	max. 12250 rpm	25	100
813M218067	T27	180 x 6,0 x 22,23	7" x 1/4" x 7/8"	A 24 R BF	max. 8500 rpm	10	60
813M218087	T27	180 x 8,0 x 22,23	7" x 5/16" x 7/8"	A 24 R BF	max. 8500 rpm	10	60
813M223067	T27	230 x 6,0 x 22,23	9" x 1/4" x 7/8"	A 24 R BF	max. 6650 rpm	10	40

### Flap Discs MAGMAFLAP



**MAGMAFLAP** flap discs ensure effective cleaning of metal surfaces welded with different grain sizes, alloy or non-alloy steels, stainless steels, iron, etc. Longer operation time and consistent surface quality supports efficient work to be carried out.



Product Code	Category	Dimensions		Quality	Rotation	Box Qty.	Inner Box Qty.
813M31154A	AO FLAP	115 x 22	Conic	40 P	max. 13300 rpm	10	180
813M31156A	AO FLAP	115 x 22	Conic	60 P	max. 13300 rpm	10	180
813M31158A	AO FLAP	115 x 22	Conic	80 P	max. 13300 rpm	10	180
813M31154Z	ZR FLAP	115 x 22	Conic	40 P	max. 13300 rpm	10	180
813M31156Z	ZR FLAP	115 x 22	Conic	60 P	max. 13300 rpm	10	180
813M31158Z	ZR FLAP	115 x 22	Conic	80 P	max. 13300 rpm	10	180
813M31254A	AO FLAP	125 x 22	Conic	40 P	max. 12250 rpm	10	180
813M31256A	AO FLAP	125 x 22	Conic	60 P	max. 12250 rpm	10	180
813M31258A	AO FLAP	125 x 22	Conic	80 P	max. 12250 rpm	10	180
813M31254Z	ZR FLAP	125 x 22	Conic	40 P	max. 12250 rpm	10	180
813M31256Z	ZR FLAP	125 x 22	Conic	60 P	max. 12250 rpm	10	180
813M31258Z	ZR FLAP	125 x 22	Conic	80 P	max. 12250 rpm	10	180
813M31804A	AO FLAP	180 x 22	Conic	40 P	max. 8500 rpm	10	80
813M31806A	AO FLAP	180 x 22	Conic	60 P	max. 8500 rpm	10	80
813M31808A	AO FLAP	180 x 22	Conic	80 P	max. 8500 rpm	10	80
813M31804Z	ZR FLAP	180 x 22	Conic	40 P	max. 8500 rpm	10	80
813M31806Z	ZR FLAP	180 x 22	Conic	60 P	max. 8500 rpm	10	80
813M31808Z	ZR FLAP	180 x 22	Conic	80 P	max. 8500 rpm	10	80
813M41155Z	%100 ZR FLAP	115 x 22	Conic	50 P	max. 13300 rpm	10	180

%100 ZR - HD

## WELDING CHEMICALS

### Welding Spray

Code: 8101000010



400 gr

- Prevents sticking of burr particles o the torch nozzle and workpiece, especially during the MIG/MAG welding.
- Extends the life of the nozzle, contact nozzle and gas distributor.
- Paint and marking can be applied to the treated metal.
- Industrial product.
- Provides long-term activity.
- Not flammable.
- Silicone-free.

### Protective Welding Paste

Code: 8101000020



300 gr

- Prevents sticking of splashing parts to the torch in MIG/MAG welding operations.
- During the welding process, the tip of the hot torch is dipped into the nozzle wax in 2-3 mm.
- Protects the torch and extends the life of the consumables.
- Non-toxic, odorless and fumeless.
- Protects metal surface against corrosion
- Does not melt at room temperature.
- No combustion or flare
- Silicone, CFC, solvent free.

### Anti Spatter

4 kg Code: 8105000015

20 kg Code: 8105000017



20 kg

4 kg

- Prevents sticking of burr particles o the torch nozzle and workpiece, especially during the MIG/MAG welding.
- Extends the life of the nozzle, contact nozzle and gas distributor.
- Prevents the welding splashes from sticking to the surface by being applied to the metal surface to be welded in the workpiece.
- Can be applied to the welding area and torch nozzle by spray or with a brush.
- No effect on paint process.
- Industrial product.
- Provides long-term activity.
- No combustion or flare
- Silicone-free.



## WELDING CHEMICALS

### Coolant

Code: 8105028872



4 lt

- Used in the plasma cutting unit cooling system.
- Extends the life of the plasma torch and consumables.
- Increases cutting speed and cut quality.
- Compatible with metal and non-metal parts of the machine.

### Inox Paste

0,9 kg Code: 8105000132

2,0 kg Code: 8105000131



0,9 kg



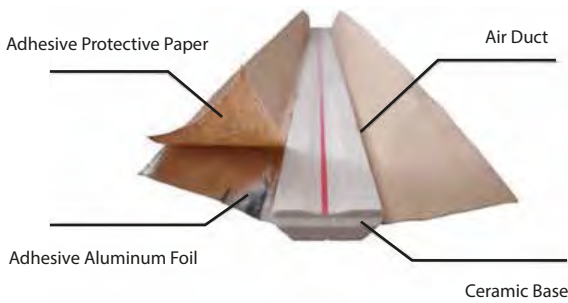
2 kg

- The passive layer on the stainless surface can be damaged during the welding process or heat treatment on stainless surfaces and causes change of color and oxidation on the surface. Magmaweld Inox wax polish eliminates these negative effects on stainless surfaces. It is applied to the areas with color change where passivation is damaged with a brush when the material is cold and washed with water after waiting for 20-30 minutes.
- Short reaction time
- A homogenous color appearance is obtained without yellowing.

# CERAMIC BACKINGS

## Application Advantages

- It provides high weld seams root passes.
- It provides high fill efficiency.
- It significantly reduces the use of ceiling welding with tough welding positions.
- It provides the ability to make the source one-sided.



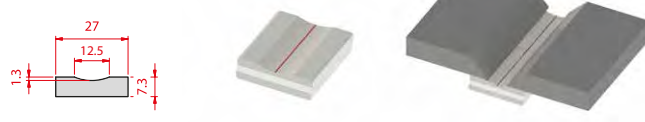
CB 11 - 060



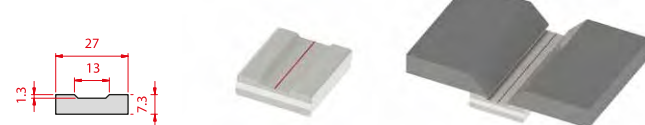
CB 11 - 100



CB 11 - 125



CB 21 - 150

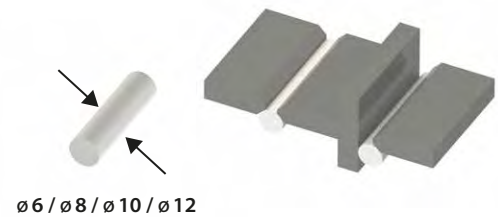


CB 50 - 60

CB 50 - 80

CB 50 - 100

CB 50 - 120



Product Code	Product Name	Pieces/Inner Box	Width	Thickness	Slot Width	Slot Depth	Length	Type
8110001106	CB 11 - 060	60 pcs.	27 mm	7.3 mm	6 mm	1.3 mm	600 mm	Flat/Circular Slotted
8110001110	CB 11 - 100	60 pcs.	27 mm	7.3 mm	9 mm	1.3 mm	500 mm	Flat/Circular Slotted
8110001112	CB 11 - 125	60 pcs.	27 mm	7.3 mm	12.5 mm	1.3 mm	500 mm	Flat/Circular Slotted
8110002115	CB 21 - 150	60 pcs.	27 mm	7.3 mm	13 mm	1.3 mm	500 mm	Flat / Rectangular Slotted
8110005006	CB 50 - 60	150 pcs.	-	6 mm	-	-	500 mm	Round
8110005008	CB 50 - 80	120 pcs.	-	8 mm	-	-	500 mm	Round
8110005010	CB 50 - 100	100 pcs.	-	10 mm	-	-	500 mm	Round
8110005012	CB 50 - 120	90 pcs.	-	12 mm	-	-	500 mm	Round

## CARBON CUTTING AND GOUGING ELECTRODES



Carbon electrodes, can easily cut thick metals and can operate at high current values. They have the ability to open up to 25 mm grooves in one pass according to the diameter. The advantage of being able to observe cracks during grooving is that it is the most convenient way to shave untrimmed corners and unnecessary stacks.

Product Name	Product Code	Product Dimensions	Product Form
Carbon Cutting and Gouging Electrodes	812K001K20	5.0 x 305 mm	Flat
	812K002K20	6.5 x 305 mm	Flat
	812K003K21	8.0 x 305 mm	Flat
	812K004K20	9.5 x 305 mm	Flat
	812K004K21	10.0 x 305 mm	Flat
	812K005K22	11.0 x 305 mm	Flat
	812K006K23	13.0 x 305 mm	Flat
	812K109K26	9.0 x 355 mm	Flat
	812K116K22	10.0 x 430 mm	Extended
	812K117K23	11.0 x 430 mm	Extended
	812K118K25	13.0 x 430 mm	Extended
	812K119K25	16.0 x 430 mm	Extended
Gouging Torch	7908201000	1000 Amps	Pneumatic



## MIG TORCHES

### Lava MIG Series

Magmaweld MIG torches will meet with your requirements on Price / Performance ratios.



## MIG TORCHES



Technical Specifications		Lava MIG 15	Lava MIG 25	Lava MIG 35	Lava MIG 40	Lava MIG 50W/WR	Lava MIG 65W
Current	CO <sub>2</sub>	150 A	200 A	300 A	340 A	450 A / (WR) 450 A	550 A
Duty Cycle		%60	%60	%60	%60	%100	%100
Cooling Type		Air	Air	Air	Air	Water	Double Water
Product Codes	Torch 3 m	7120015003	7120020003	7120035003	7120040003	7120050003 / (WR)7120150003	7120160003
	4 m	7120015004	7120020004	7120035004	7120040004	7120050004 / (WR)7120150004	7120160004
	5 m	7120015005	7120020005	7120035005	7120040005	7120050005 / (WR)7120150005	7120160005
	CO <sub>2</sub> Regulator	7020001005					
	Argon/Mix Regulator	7020001004					
	CO <sub>2</sub> Heater 220V	7020009002					
	CO <sub>2</sub> Heater 24V	7020009003					



## TIG TORCHES

### Lava TIG Series

Magmaweld TIG torches that will take you to the top in lightness and ergonomics.

#### Consumables

Easy to find, top quality and affordable consumables.

#### Grip Handle

Handles produced in two different sizes offer a variety of models that you can choose according to your needs. Ergonomic, non-slip grip structure creates privileges with screwless assembly and special design joints.

#### Movable Joint

The joint that can be disassembled with a single action, provides ease of service as well as providing high level of movement in the most sensitive applications.

#### Back Connector and Ports

Case made of glass-reinforced polymer material and manufactured in accordance with EN 60974-1 standards. This Design offers simple and aesthetic solution for connection problems and machine incompatibilities.

#### Torch Body

Silicone-backed rubber material with high temperature resistance combines strength and lightness.

#### Remote Buttons\*

Easy to remove and install buttons can be changed in less than 5 seconds. These buttons, which have a mini card design, are produced in a way to prioritize long life and precision.

#### Leather Case

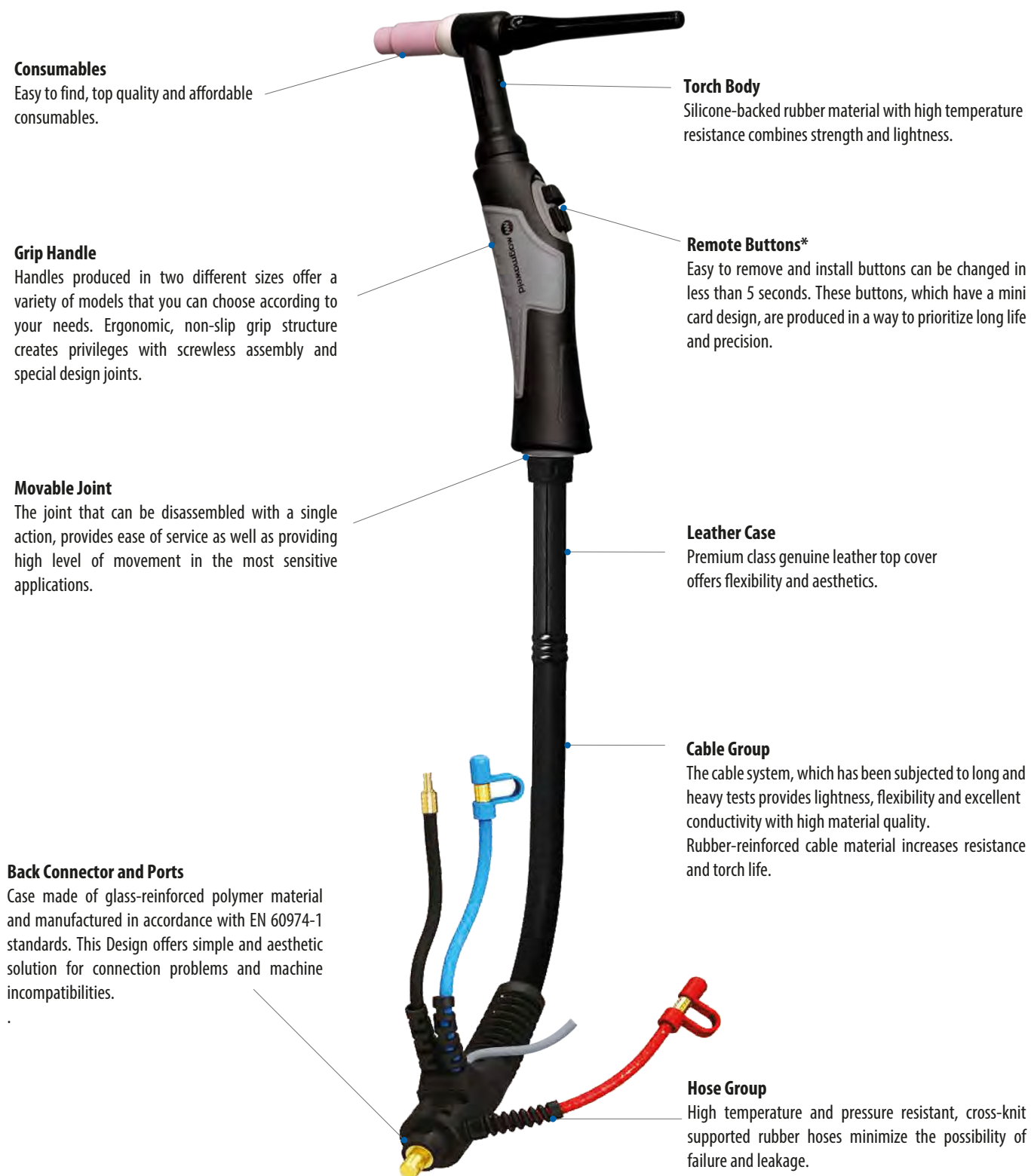
Premium class genuine leather top cover offers flexibility and aesthetics.

#### Cable Group

The cable system, which has been subjected to long and heavy tests provides lightness, flexibility and excellent conductivity with high material quality. Rubber-reinforced cable material increases resistance and torch life.

#### Hose Group

High temperature and pressure resistant, cross-knit supported rubber hoses minimize the possibility of failure and leakage.



\*It varies according to the model.



## TIG TORCHES



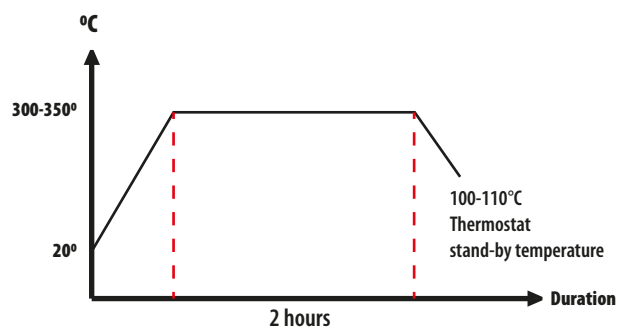
Technical Specifications		Lava TIG 9	Lava TIG 17	Lava TIG 26	Lava TIG 24W	Lava TIG 20W	Lava TIG 18W
Current	DC	125 A	150 A	180 A	180 A	225 A	380 A
	AC	90 A	105 A	125 A	125 A	160 A	270 A
Duty Cycle		%35	%35	%35	%100	%100	%100
Cooling Type		Air	Air	Air	Water	Water	Water
Product Codes	Torch	4 m	7110012504	7110013504	7110018004	7110022504	7110038004
		8 m	7110012508	7110013508	7110018008	7110022508	7110038008
	Regulator		7020001004				

## ELECTRODE AND WELDING FLUX DRYING OVENS



Electrode covers tend to be more or less humidified based on their types. During transport and storage, the electrode cover gets humid from the air. Despite the plastic packaging, the amount of humidity on the cover increases during storage depending on the temperature and relative humidity in the environment. Electrodes should be stored under suitable conditions and dried before use if necessary according to the information stated on the labels. As Magmaweld, we offer various types and sizes of drying ovens for your use.

**Covered electrodes and welding fluxes should be dried at the manufacturer's recommended temperature and period to prevent some defects during the welding process in case of humidification.**

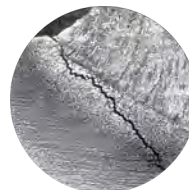


- The most common errors encountered are as follows if no drying is applied on humid electrodes in arc welding (rutile, basic, stainless steel):

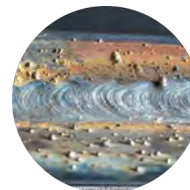
- a) Porosity formation,
- b) Hydrogen cracks (cold cracks),
- c) Spatter



a



b



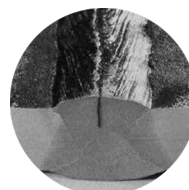
c

- The most common errors encountered are as follows if no drying is applied on humid fluxes in submerged arc welding:

- d) Porosity formation in the seam and/or slag,
- e) Hydrogen cracks



d



e

## ELECTRODE AND WELDING FLUX DRYING OVENS

### Electrode Drying Ovens



Technical Specifications	MKF M
Capacity	5 kg - 75 pcs. of Rod Electrodes
Outer Diameter	10 cm
Height	50 cm
Weight	2.5 kg
Product Code	8321010M00

Technical Specifications	MKF TE
Capacity	5 kg - 100 pcs. of Rod Electrodes
Outer Diameter	16 cm
Max. Heating Degree	0 - 130 °C
Operating Power	200 Watt
Operating Voltage	220 - 240 Volt
Height	50 cm (56 cm with the holder)
Weight	5 kg
Input Current	1 A
Product Code	8321080M25



Technical Specifications	MKF 1YE
Capacity	5 kg - 100 pcs. of Rod Electrodes
Outer Diameter	16 cm
Max. Heating Degree	60 - 200 °C
Operating Power	200 Watt
Operating Voltage	220 - 240 Volt
Height	60 cm (65 cm with the holder)
Weight	8 kg
Input Current	1 A
Product Code	8321010M25

Please contact us for our other models.

# ELECTRODE AND WELDING FLUX DRYING OVENS

## Electrode Drying Ovens

Technical Specifications	MKF 2YE
Capacity	10 kg - 200 pcs. of Rod Electrodes
Outer Diameter	22 cm
Max. Heating Degree	60 - 200 °C
Operating Power	400 Watt
Operating Voltage	220 - 240 Volt
Height	60 cm (65 cm with the holder)
Weight	10 kg
Input Current	2 A
Product Code	8321040M25



Technical Specifications	MKF 4YE
Capacity	20 kg - 400 pcs. of Rod Electrodes
Outer Diameter	25 cm
Max. Heating Degree	60 - 300 °C
Operating Power	400 Watt
Operating Voltage	220 - 240 Volt
Height	60 cm
Weight	20 kg
Input Current	2 A
Product Code	8321060M25

Technical Specifications	MKF 1KE
Capacity	5 kg - 100 pcs. of Rod Electrodes
Max. Heating Degree	60 - 200 °C
Operating Power	400 Watt
Operating Voltage	220 - 240 Volt
Height	60 cm
Width	20 cm
Length	20 cm
Weight	8 kg
Input Current	2 A
Product Code	8321090M25



Please contact us for our other models.

# ELECTRODE AND WELDING FLUX DRYING OVENS

## Electrode Drying Ovens

Technical Specifications	MKF 2KE
Capacity	10 kg - 200 pcs. of Rod Electrodes
Max. Heating Degree	60 - 200 °C
Operating Power	400 Watt
Operating Voltage	220 - 240 Volt
Height	56 cm
Width	30 cm
Length	30 cm
Weight	12 kg
Input Current	2 A
Product Code	8321100M25



Technical Specifications	MKF 4KE
Capacity	20 kg - 400 pcs. of Rod Electrodes
Max. Heating Degree	60 - 300 °C
Operating Power	800 Watt
Operating Voltage	220 - 240 Volt
Height	68 cm
Width	35 cm
Length	35 cm
Weight	35 kg
Input Current	4 A
Product Code	8321120M25

Technical Specifications	MKF 6KE
Capacity	30 kg - 600 pcs. of Rod Electrodes
Max. Heating Degree	60 - 300 °C
Operating Power	800 Watt
Operating Voltage	220 - 240 Volt
Height	68 cm
Width	40 cm
Length	40 cm
Weight	40 kg
Input Current	4 A
Product Code	8321130M25



Please contact us for our other models.



# ELECTRODE AND WELDING FLUX DRYING OVENS

## Electrode Drying Ovens

Technical Specifications	MKF 10E
Capacity	50 kg - 1000 pcs. of Rod Electrodes
Max. Heating Degree	0 - 400 °C
Operating Power	3000 Watt
Operating Voltage	380 - 400 Volt
Height	79 cm (109 cm with the electrical panel)
Width	50 cm
Length	65 cm
Weight	40 kg
Input Current	14 A
Product Code	8322010M45



Technical Specifications	MKF 20E
Capacity	100 kg - 2000 pcs. of Rod Electrodes
Max. Heating Degree	0 - 400 °C
Operating Power	4500 Watt
Operating Voltage	380 - 400 Volt
Height	102 cm (134 cm with the electrical panel)
Width	46 cm
Length	67 cm
Weight	90 kg
Input Current	14 A
Product Code	8322020M45

Technical Specifications	MKF 30E
Capacity	150 kg - 3000 pcs. of Rod Electrodes
Max. Heating Degree	0 - 400 °C
Operating Power	4500 Watt
Operating Voltage	380 - 400 Volt
Height	113 cm (147 cm with the electrical panel)
Width	67 cm
Length	64 cm
Weight	105 kg
Input Current	21 A
Product Code	8322030M45



Please contact us for our other models.

# ELECTRODE AND WELDING FLUX DRYING OVENS

## Electrode Drying Ovens

Technical Specifications	MKF 50E
Capacity	250 kg - 5000 pcs. of Rod Electrodes
Max. Heating Degree	0 - 400 °C
Operating Power	4500 Watt
Operating Voltage	380 - 400 Volt
Height	115 cm (150 cm with the electrical panel)
Width	67 cm
Length	77 cm
Weight	160 kg
Input Current	21 A
Product Code	8322040M45



Technical Specifications	MKF 2-30E
Capacity	300 kg - 6000 pcs. of Rod Electrodes
Max. Heating Degree	0 - 400 °C
Operating Power	3000 + 3000 Watt
Operating Voltage	380 - 400 Volt
Height	140 cm (165 cm with the electrical panel)
Width	75 cm
Length	60 cm
Weight	225 kg
Input Current	28 A
Product Code	8322060M45

## Welding Flux Drying Ovens

Technical Specifications	MKF 50T
Capacity	50 kg
Max. Heating Degree	0 - 400 °C
Operating Power	3000 Watt
Operating Voltage	380 - 400 Volt
Height	115 cm
Width	70 cm
Length	74 cm (94 cm with the electrical panel)
Weight	115 kg
Input Current	14 A
Product Code	8323010M45



Please contact us for our other models.

# ELECTRODE AND WELDING FLUX DRYING OVENS

## Welding Flux Drying Ovens

Technical Specifications	MKF 125T
Capacity	125 kg
Max. Heating Degree	0 - 400 °C
Operating Power	4500 Watt
Operating Voltage	380 - 400 Volt
Height	130 cm
Width	124 cm
Length	90 cm (110 cm with the electrical panel)
Weight	190 kg
Input Current	21 A
Product Code	8323020M45



Technical Specifications	MKF 2-125T
Capacity	125 + 125 kg
Max. Heating Degree	0 - 400 °C
Operating Power	3000 + 3000 Watt
Operating Voltage	380 - 400 Volt
Height	113 cm
Width	75 cm
Length	140 cm (180 cm with the electrical panel)
Weight	200 kg
Input Current	28 A
Product Code	8323060M45

Technical Specifications	MKF 250T
Capacity	250 kg
Max. Heating Degree	0 - 400 °C
Operating Power	7500 Watt
Operating Voltage	380 - 400 Volt
Height	120 cm
Width	140 cm (160 cm with the electrical panel)
Length	85 cm
Weight	230 kg
Input Current	28 A
Product Code	8323030M45



Please contact us for our other models.

# ELECTRODE AND WELDING FLUX DRYING OVENS

## Welding Flux Drying Ovens

Technical Specifications	MKF 2-250T
Capacity	250 + 250 kg
Max. Heating Degree	0 - 400 °C
Operating Power	4500 + 4500 Watt
Operating Voltage	380 - 400 Volt
Height	150 cm
Width	75 cm
Length	150 cm (190 cm with the electrical panel)
Weight	370 kg
Input Current	28 A
Product Code	8323070M45



Technical Specifications	MKF 2-350T
Capacity	350 + 350 kg
Max. Heating Degree	0 - 400 °C
Operating Power	4500 + 4500 Watt
Operating Voltage	380 - 400 Volt
Height	160 cm
Width	160 cm (180 cm with the electrical panel)
Length	80 cm
Weight	390 kg
Input Current	42 A
Product Code	8323040M45

Technical Specifications	MKF TE 50
Capacity	50 kg (Flux) + 50 kg (Electrode)
Max. Heating Degree	0 - 400 °C
Operating Power	6000 Watt
Operating Voltage	380 - 400 Volt
Height	72 cm (102 cm with the electrical panel)
Width	53 cm
Length	67 cm
Weight	180 kg
Input Current	14 A
Product Code	8324010M45



Please contact us for our other models.

## Non-Stop Welding Since 1957

Magmaweld is a developer & manufacturer of Stick Electrodes, MIG/MAG & TIG Wires, Flux Cored Wires, Submerged-Arc Wires and Fluxes, Welding Machines, Fume Extractors, Welding Ancillary Products and Robotic Automation Systems since 1957 in Turkey. 95% of its sales program is manufactured by the two factories in Manisa/Turkey.



(+90) 444 93 53  
magmaweld.com  
info@magmaweld.com