

PRODUCT RANGE & INNOVATION OVERVIEW



ABOUT US

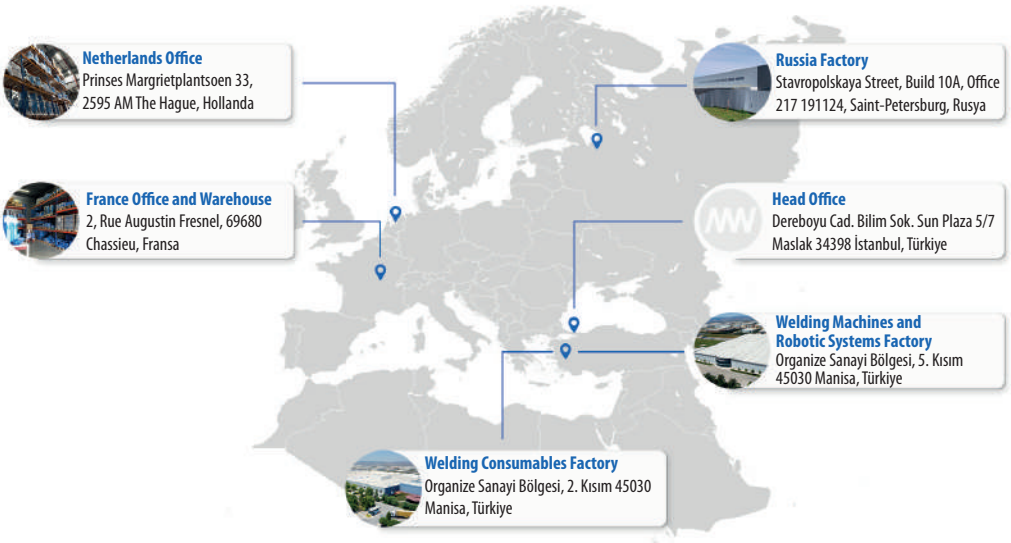
Magmaweld is a leading and trusted brand in welding. Since its foundation in 1957, the company has played a pioneering role in the development of the Turkish welding industry, building a strong reputation through a comprehensive and evolving product portfolio.

Responding to the needs of an advancing industrial landscape, Magmaweld expanded its manufacturing capabilities to include MIG/MAG and TIG wires, flux-cored wires, and submerged arc wires and fluxes. In 1971, the company started producing welding machines, later extending into robotic welding solutions through a strategic partnership with Panasonic in 1998.

In 2000, Magmaweld centralized its R&D, production, and logistics operations in a state-of-the-art facility in Manisa, Turkey. The move significantly enhanced efficiency, innovation, and quality. With this strategic step, Magmaweld strengthened its global presence and introduced its internationally recognized brand “Magmaweld”. The name reflects the resemblance between molten magma beneath the Earth’s surface and the molten weld pool.

Today, Magmaweld operates local production and sales organizations in **6 countries** across **3 continents** and exports to more than **75 countries** worldwide.

With a commitment to “**Non-Stop Welding**”, Magmaweld empowers industries with high-quality products, advanced technologies, and solution-driven engineering excellence, ensuring seamless and reliable welding operations across the globe.



PRODUCTS

Welding Machines



MMA Welding Machines



TIG Welding Machines



MIG/MAG Welding Machines



Submerged Arc Welding
Machines & Wear Parts



Plasma Cutting Equipment



Laser Welding Machines



Plasma/Laser Cutting Tables

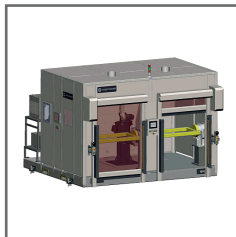


Torches & Consumables

Robotic Systems



Robotic Welding Systems



Robotic Welding Cabinets

MagNET - Industry 4.0 Compatible IIoT Platform



PRODUCTS

Welding Consumables



Welding Electrodes



TIG Wires



MIG/MAG Wires



Flux Cored Wires



Subarc Wires & Fluxes



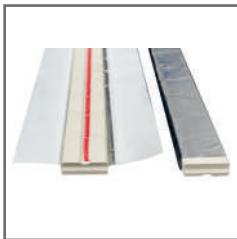
Hardfacing Products



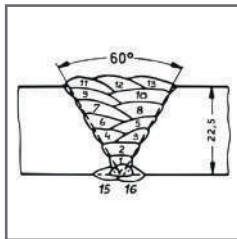
Brazing Products



Carbon Electrodes



Ceramic Backings



EN 1090 WPS/WPQR Package

PRODUCTS

Welding Ancillary Products



Abrasives



Drying Ovens



Welding and Cutting Tables



Welding Chemicals

Occupational Health & Safety



Fume Extraction &
Filtering Systems



MIG / TIG Gloves



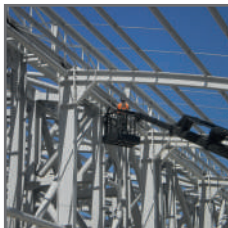
Welding Masks

INDUSTRIES AND APPLICATIONS

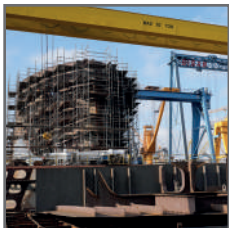
JOINING



Automotive



Steel Constructions



Shipbuilding & Offshore Platforms



Pipelines



Infrastructure



Energy



Petrochemical



Pressure Vessels & Tanks



Food, Beverage & Chemical Industry Equipment

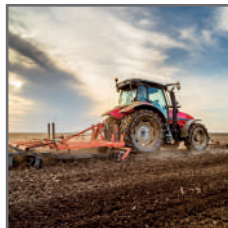


Transportation & Vehicle Equipment

HARDFACING



Mining



Agriculture



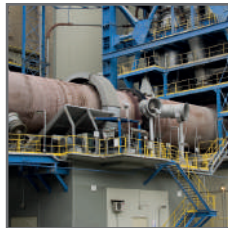
Iron-Steel



Glass & Ceramics



Excavation & Construction



Cement



Railway



Brick



Crushing & Screening



Metal Forming

ID 800E

Enables two operators to weld simultaneously at 400A each, or a single operator to weld at up to 800A

Inverter Technology for Construction Sites



EN 60974-1

EN 60974-10

RoHS



MKM 626S / 636MA / 726S

Stay Safe With Superior Protection!

Replaceable Battery, Solar Technology.



EN ISO 16321-2



FCO Series Open-Arc Hardfacing Flux Cored Wires

High Abrasion Resistant

FCO 510 FCO 511

FCO 512 FCO 514

FCO 526 FCO 528

FCO 531 FCO 532

FCO 540 FCO 711



**Welding
Consumables
Catalogue**



**Welding &
Cutting
Machines
Catalogue**



**Welding
Torches &
Consumables
Catalogue**



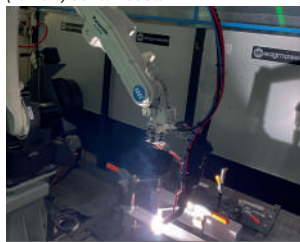
**Welding
Accessories &
Workshop
Equipment
Catalogue**



**Robotic
Welding
Systems
Catalogue**
G4 Series Robots



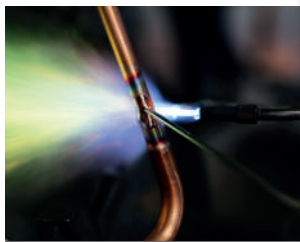
**Robotic
Welding
Systems
Catalogue**
*WG4/WGH4
(Towers) Series Robots*



**Welding
Consumables
for Hardfacing,
Repair &
Maintenance
Catalogue**



**Brazing
Products
Catalogue**



**Occupational
Health &
Safety
Catalogue**

