



WELDING ACCESSORIES AND WORKSHOP EQUIPMENT



(+90) 444 93 53
magmaweld.com
info@magmaweld.com

 (+90) 538 927 12 62

Magmaweld is a leading and trusted brand in welding. Since its foundation in 1957, the company has played a pioneering role in the development of the Turkish welding industry, building a strong reputation through a comprehensive and evolving product portfolio.

Responding to the needs of an advancing industrial landscape, Magmaweld expanded its manufacturing capabilities to include MIG/MAG and TIG wires, flux-cored wires, and submerged arc wires and fluxes. In 1971, the company started producing welding machines, later extending into robotic welding solutions through a strategic partnership with Panasonic in 1998.

In 2000, Magmaweld centralized its R&D, production, and logistics operations in a state-of-the-art facility in Manisa, Turkey. The move significantly enhanced efficiency, innovation, and quality. With this strategic step, Magmaweld strengthened its global presence and introduced its internationally recognized brand "Magmaweld". The name reflects the resemblance between molten magma beneath the Earth's surface and the molten weld pool.

Today, Magmaweld operates local production and sales organizations in **6 countries** across **3 continents** and exports to more than **75 countries** worldwide.

With a commitment to **"Non-Stop Welding"**, Magmaweld empowers industries with high-quality products, advanced technologies, and solution-driven engineering excellence, ensuring seamless and reliable welding operations across the globe.



Welding Consumables Factory
Organize Sanayi Bölgesi 2. Kısım, Manisa, Turkey



Welding Machines and Automation Factory
Organize Sanayi Bölgesi 5. Kısım, Manisa, Turkey

INDEX

ABRASIVE PRODUCTS

6

GRINDING MACHINES

8

ANGLE GRINDERS

10

WORKSHOP PRODUCTS

Welding Grinding Table

12

Welding Tables with Cover

13

Welding Hammers

14

Magmafix

15

WELDING CHEMICALS

16

ELECTRODE AND WELDING FLUX DRYING OVENS

Electrode Drying Ovens

18

Welding Flux Drying Ovens

24





Cut Off Discs MAGMACUT



**METAL
STEEL**

MAGMACUT cut off discs are suitable for production of welded manufacturing, thin sheet metals, profiles, pipes and all structural steels (ST 37, 42, 52). It offers long lasting and fast clipping in cutting operations with its durable structure.



Product Code	Category		Dimensions		Quality	Rotation	Box Qty.	Inner Box Qty.
813M111521	Flat	T41	115 x 2,5 x 22,23	4 1/2" x 3/32" x 7/8"	A 30 R BF	max. 13300 rpm	50	400
813M111522	Dished	T42	115 x 2,5 x 22,23	4 1/2" x 3/32" x 7/8"	A 30 R BF	max. 13300 rpm	50	400
813M111531	Flat	T41	115 x 3,0 x 22,23	4 1/2" x 1/8" x 7/8"	A 30 R BF	max. 13300 rpm	50	200
813M111532	Dished	T42	115 x 3,0 x 22,23	4 1/2" x 1/8" x 7/8"	A 30 R BF	max. 13300 rpm	50	200
813M112521	Flat	T41	125 x 2,5 x 22,23	5" x 3/32" x 7/8"	A 30 R BF	max. 12250 rpm	50	400
813M112522	Dished	T42	125 x 2,5 x 22,23	5" x 3/32" x 7/8"	A 30 R BF	max. 12250 rpm	50	400
813M112531	Flat	T41	125 x 3,0 x 22,23	5" x 1/8" x 7/8"	A 30 R BF	max. 12250 rpm	50	200
813M112532	Dished	T42	125 x 3,0 x 22,23	5" x 1/8" x 7/8"	A 30 R BF	max. 12250 rpm	50	200
813M118031	Flat	T41	180 x 3,0 x 22,23	7" x 1/8" x 7/8"	A 30 R BF	max. 8500 rpm	25	150
813M118032	Dished	T42	180 x 3,0 x 22,23	7" x 1/8" x 7/8"	A 30 R BF	max. 8500 rpm	25	150
813M123031	Flat	T41	230 x 3,0 x 22,23	9" x 1/8" x 7/8"	A 30 R BF	max. 6650 rpm	25	100
813M123032	Dished	T42	230 x 3,0 x 22,23	9" x 1/8" x 7/8"	A 30 R BF	max. 6650 rpm	25	100
813M123021	Flat	T41	230 x 2,5 x 22,23	9" x 3/32" x 7/8"	A 30 R BF	max. 6650 rpm	25	100
813M123022	Dished	T42	230 x 2,5 x 22,23	9" x 3/32" x 7/8"	A 30 R BF	max. 6650 rpm	25	100
813M135021	Flat	T41	350 x 3,5 x 25,40	14" x 9/64" x 1"	A 30 R BF	max. 4400 rpm	10	40
813M111511	Flat	T41	115 x 1,0 x 22,23	4 1/2" x 1/25" x 7/8"	INOX A 60 T BF	max. 13300 rpm	25	400

INOX
STAINLESS
STEEL

Cut Off Discs MAGMACUT



**INOX
STAINLESS
STEEL**

MAGMACUT INOX PRO is suitable for cutting processes of thin stainless steel (inox) sheets, pipes and sheet bars. The product with special grains and hard structure is effective in the cutting process of stainless materials.



Product Code	Category		Dimensions		Quality	Rotation	Box Qty.	Inner Box Qty.
813MP11511	Flat	T41	115 x 1,0 x 22,23	4 1/2" x 1/25" x 7/8"	INOX PRO A 60 T BF	max. 13300 rpm	25	400
813MP12511	Flat	T41	125 x 1,0 x 22,23	5" x 1/25" x 7/8"	INOX PRO A 60 T BF	max. 12250 rpm	25	400
813MP12512	Flat	T41	125 x 1,2 x 22,23	5" x 3/64" x 7/8"	INOX PRO A 60 T BF	max. 12250 rpm	25	400
813MP18016	Flat	T41	180 x 1,6 x 22,23	7" x 1/16" x 7/8"	INOX PRO A 60 T BF	max. 8500 rpm	40	320
813MP23019	Flat	T41	230 x 1,9 x 22,23	9" x 1/13" x 7/8"	INOX PRO A 60 T BF	max. 6650 rpm	30	120

**INOX
PRO**

ABRASIVE PRODUCTS



Grinding Discs MAGMAGRIND



**METAL
STEEL**

MAGMAGRIND grinding discs provide efficient grinding operation on welding seams, low and high alloy steels, hard and soft steels and stainless-steel materials.



Product Code	Category	Dimensions		Quality	Rotation	Box Qty.	Inner Box Qty.
813M211567	T27	115 x 6,0 x 22,23	4 1/2" x 1/4" x 7/8"	A 24 R BF	max. 13300 rpm	25	100
813M212567	T27	125 x 6,0 x 22,23	5" x 1/4" x 7/8"	A 24 R BF	max. 12250 rpm	25	100
813M218067	T27	180 x 6,0 x 22,23	7" x 1/4" x 7/8"	A 24 R BF	max. 8500 rpm	10	60
813M218087	T27	180 x 8,0 x 22,23	7" x 5/16" x 7/8"	A 24 R BF	max. 8500 rpm	10	60
813M223067	T27	230 x 6,0 x 22,23	9" x 1/4" x 7/8"	A 24 R BF	max. 6650 rpm	10	40

Flap Discs MAGMAFLAP



**METAL
STEEL**

MAGMAFLAP flap discs ensure effective cleaning of metal surfaces welded with different grain sizes, alloy or non-alloy steels, stainless steels, iron, etc. Longer operation time and consistent surface quality supports efficient work to be carried out.



Product Code	Category	Dimensions		Quality	Rotation	Box Qty.	Inner Box Qty.
813M31154A	AO FLAP	115 x 22	Conic	40 P	max. 13300 rpm	10	180
813M31156A	AO FLAP	115 x 22	Conic	60 P	max. 13300 rpm	10	180
813M31158A	AO FLAP	115 x 22	Conic	80 P	max. 13300 rpm	10	180
813M31154Z	ZR FLAP	115 x 22	Conic	40 P	max. 13300 rpm	10	180
813M31156Z	ZR FLAP	115 x 22	Conic	60 P	max. 13300 rpm	10	180
813M31158Z	ZR FLAP	115 x 22	Conic	80 P	max. 13300 rpm	10	180
813M31254A	AO FLAP	125 x 22	Conic	40 P	max. 12250 rpm	10	180
813M31256A	AO FLAP	125 x 22	Conic	60 P	max. 12250 rpm	10	180
813M31258A	AO FLAP	125 x 22	Conic	80 P	max. 12250 rpm	10	180
813M31254Z	ZR FLAP	125 x 22	Conic	40 P	max. 12250 rpm	10	180
813M31256Z	ZR FLAP	125 x 22	Conic	60 P	max. 12250 rpm	10	180
813M31258Z	ZR FLAP	125 x 22	Conic	80 P	max. 12250 rpm	10	180
813M31804A	AO FLAP	180 x 22	Conic	40 P	max. 8500 rpm	10	80
813M31806A	AO FLAP	180 x 22	Conic	60 P	max. 8500 rpm	10	80
813M31808A	AO FLAP	180 x 22	Conic	80 P	max. 8500 rpm	10	80
813M31804Z	ZR FLAP	180 x 22	Conic	40 P	max. 8500 rpm	10	80
813M31806Z	ZR FLAP	180 x 22	Conic	60 P	max. 8500 rpm	10	80
813M31808Z	ZR FLAP	180 x 22	Conic	80 P	max. 8500 rpm	10	80
813M41155Z	100% ZR FLAP	115 x 22	Conic	50 P	max. 13300 rpm	10	180



Magmaweld Grinding Machines are durable and long-lasting due to their high quality and extra features. Engineered to perform under the most demanding conditions, the MGB 750, MGA 800, MGH 1600, and MGX 2600 deliver professional-grade reliability and power where it's needed most.

Magmaweld Grinding Machines:

- Designed for cutting, grinding, and sanding with flap discs on all metal and stone surfaces.
- Provides ease of use with the Soft Start feature (*valid for MGB 750 and MGA 800).
- Accessories can be changed quickly and easily.



- Spiral bevel gears made of chrome-titanium alloy ensure reduced vibration, lower noise levels, and extended service life.

- Advanced coating technology contributes to significantly prolonged motor durability.



- A 360-degree high-performance air duct system provides optimal cooling by effectively managing temperature rise.

- Compact body design offers ergonomic handling and enables fast, effortless accessory changes.



ANGLE GRINDERS



Technical Specifications	MGB 750
Power Input	750 W
Voltage	220~240 V
Frequency	50/60 Hz
No-load Speed	11000 d/min
Maximum Disc Diameter	115 mm
Weight	1.7 kg
Product Code	8360100B75

Technical Specifications	MGA 800
Power Input	800 W
Voltage	220~240 V
Frequency	50/60 Hz
No-load Speed	11000 d/min
Maximum Disc Diameter	115 mm
Weight	1.8 kg
Product Code	8360100A80



ANGLE GRINDERS



Technical Specifications	MGH 1600
Power Input	1600 W
Voltage	220~240 V
Frequency	50/60 Hz
No-load Speed	9000 d/min
Maximum Disc Diameter	125 mm
Weight	3.2 kg
Product Code	8360100H16

Technical Specifications	MGT 2600
Power Input	2600 W
Voltage	220~240 V
Frequency	50/60 Hz
No-load Speed	8000 d/min
Maximum Disc Diameter	180 mm
Weight	5.3 kg
Product Code	8360100T26

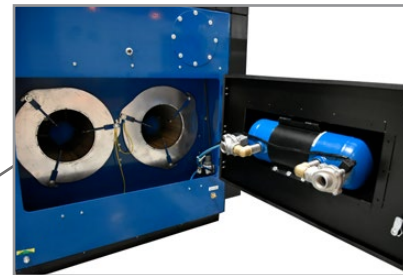


Technical Specifications	MGX 2600
Power Input	2600 W
Voltage	220~240 V
Frequency	50/60 Hz
No-load Speed	6600 d/min
Maximum Disc Diameter	230 mm
Weight	5.3 kg
Product Code	8360100X26

Welding Grinding Table



• Grinding compartment with composite grille



• Jet-Pulse Filter System

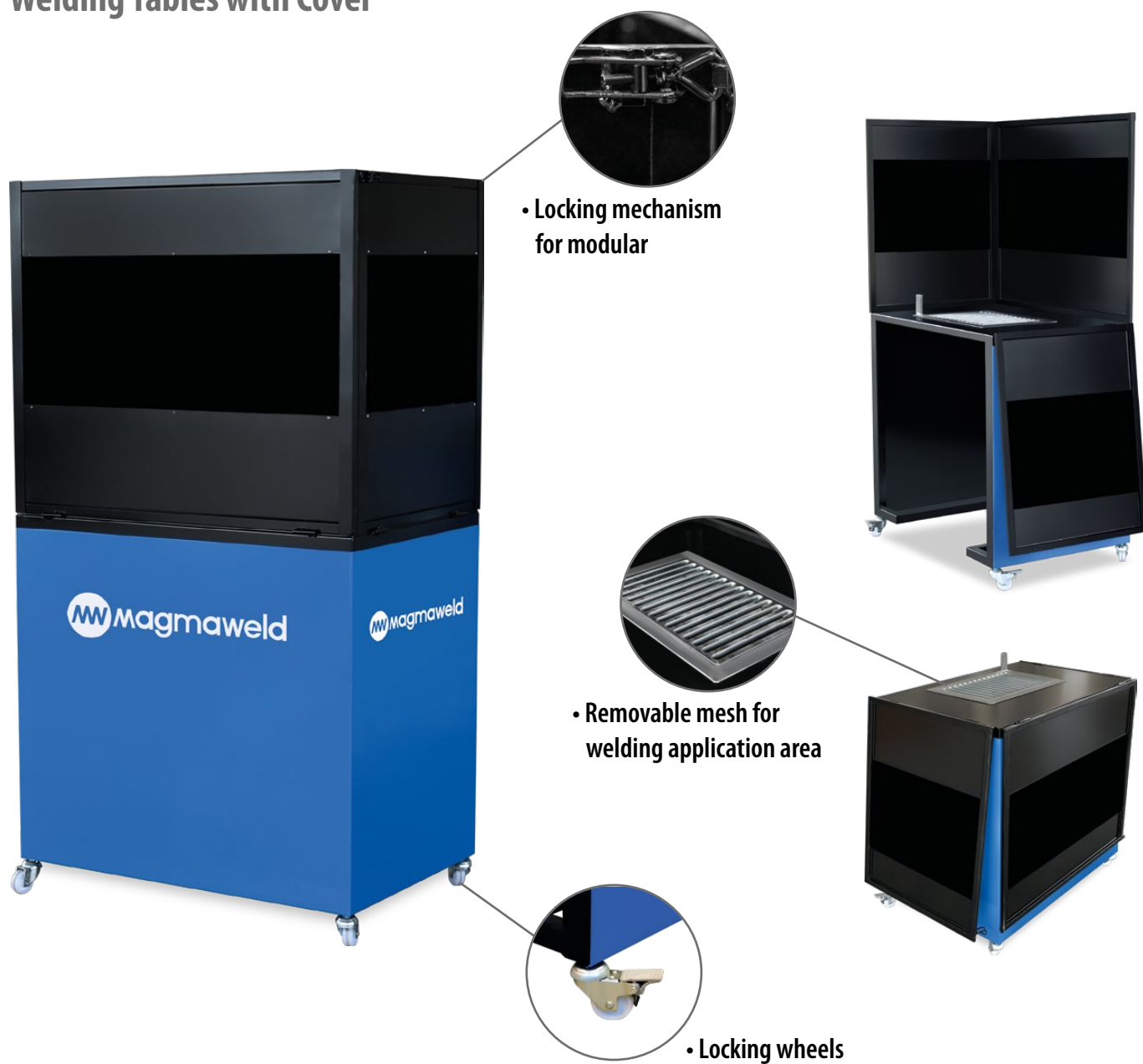


• Easy-to-clean particle tray

- **Designed to absorb dust generated during grinding of small metal parts.**
- **Suitable for precision and coarse grinding, as well as welding applications.**
- Thanks to the bottom suction system, smoke and dust are absorbed before they can reach the operator's respiratory system.
- Its robust material structure ensures safe working conditions.
- The integrated dust tray allows for easy cleaning of accumulated particles.
- The ergonomic design offers comfortable working conditions.
- The three-sided closed hood system prevents particles from spreading around.
- The plug fan provides low noise and high performance.

Technical Specifications	Unit	Data
Mains Voltage (3 Phase)	380 / 50-60 Hz	V
Rated Power	2.2	kW
Suction Capacity	3600	m ³ / hour
Noise Level	75	dB (A)
Filter Efficiency	99	%
Working Area (d x w x h)	900 x 1400 x 900	mm
Dimensions (d x w x h)	1055 x 1500 x 1650	mm
Weight	350	kg

Welding Tables with Cover



- Working table dimensions 550 x 800 x 800 mm (l x w x h).
- Visor Set dimensions 550 x 800 x 680 mm (l x w x h).
- Modular protective panels that refract light during welding.
- Wheel structure and locking wheels for easy movement capability.
- Folding feature for functional use.
- Ideal for welding and grinding applications.

Technical Specifications

Dimensions (d x w x h)	550 x 800 x 1480 mm
Weight	50 kg
Product Code	8300000500

Welding Hammers



Magmaweld welding hammers are ideal workshop tools for easily removing slag formed after welding, available in **300 g** and **500 g** spiral handle options and **500 g** plastic handle option.



300 gr



500 gr



500 gr

Magmaweld



Magmaweld magnetic squares, available in **11 kg / 22 kg** with **AT** and **AX** geometric shape options, help you secure dimensions during welding applications without the need for tacking.



- In welding and assembly work, it ensures precise angular positioning of all metal parts.
- It is easy to use practically without needing additional assistance.
- Two different holding and clamping strengths: 11 kg and 22 kg.
- For use on profiles, boards and angles.

In practice, we offer our welders the precision they need by providing two different holding strengths and two different geometric shapes, allowing them to choose according to their preferences. **Magmaweld Magnetic Squares** are an ideal workshop tool for securing parts to be welded.

Welding Spray

Code: 8101000010



400 g

- Prevents sticking of burr particles o the torch nozzle and workpiece, especially during the MIG/MAG welding.
- Extends the life of the nozzle, contact nozzle and gas distributor.
- Paint and marking can be applied to the treated metal.
- Industrial product.
- Provides long-term activity.
- Not flammable.
- Silicone-free.

Protective Welding Paste

Code: 8101000020



300 g

- Prevents sticking of splashing parts to the torch in MIG/MAG welding operations.
- During the welding process, the tip of the hot torch is dipped into the nozzle wax in 2-3 mm.
- Protects the torch and extends the life of the consumables.
- Non-toxic, odorless and fumeless.
- Protects metal surface against corrosion.
- Does not melt at room temperature.
- No combustion or flare.
- Silicone, CFC, solvent free.

Anti Spatter

4 kg Code: 8105000015

20 kg Code: 8105000017



20 kg

4 kg

- Prevents sticking of burr particles o the torch nozzle and workpiece, especially during the MIG/MAG welding.
- Extends the life of the nozzle, contact nozzle and gas distributor.
- Prevents the welding splashes from sticking to the surface by being applied to the metal surface to be welded in the workpiece.
- Can be applied to the welding area and torch nozzle by spray or with a brush.
- No effect on paint process.
- Industrial product.
- Provides long-term activity.
- No combustion or flare.
- Silicone-free.

Coolant

Code: 8105028872



4 kg

- Used in the plasma cutting unit cooling system.
- Extends the life of the plasma torch and consumables.
- Increases cutting speed and cut quality.
- Compatible with metal and non-metal parts of the machine.

Coolant

Code: 8105028872



0,9 kg

2 kg

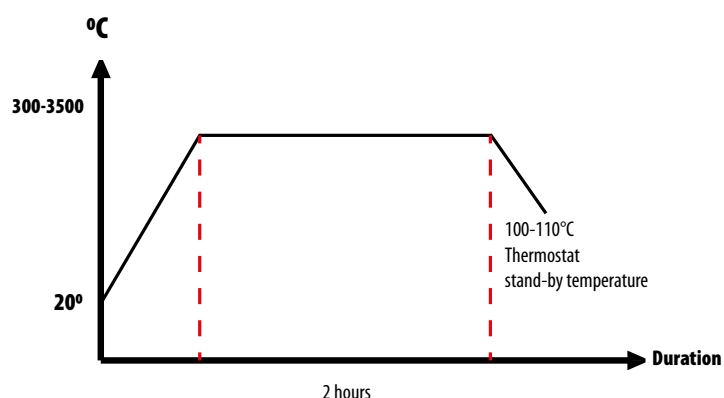
- The passive layer on the stainless surface can be damaged during the welding process or heat treatment on stainless surfaces and causes change of colorant oxidation on the surface. Magmaweld Inox wax polish eliminates these negative effects on stainless surfaces. It is applied to the areas with color change where passivation is damaged with a brush when the material is cold and washed with water after waiting for 20-30 minutes.
- Short reaction time.
- A homogenous color appearance is obtained without yellowing.

ELECTRODE AND WELDING FLUX DRYING OVENS



Electrode covers tend to be more or less humidified based on their types. During transport and storage, the electrode cover gets humid from the air. Despite the plastic packaging, the amount of humidity on the cover increases during storage depending on the temperature and relative humidity in the environment. Electrodes should be stored under suitable conditions and dried before use if necessary according to the information stated on the labels. As MagmaWeld, we offer various types and sizes of drying ovens for your use.

Covered electrodes and welding fluxes should be dried at the manufacturer's recommended temperature and period to prevent some defects during the welding process in case of humidification.

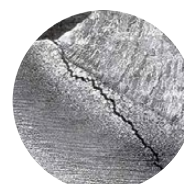


- The most common errors encountered are as follows if no drying is applied on humid electrodes in arc welding (rutile, basic, stainless steel):

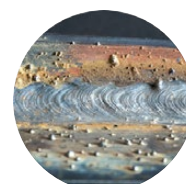
- a) Porosity formation,**
- b) Hydrogen cracks (cold cracks),**
- c) Spatter**



a



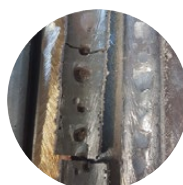
b



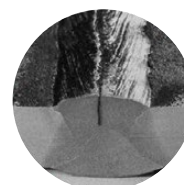
c

- The most common errors encountered are as follows if no drying is applied on humid fluxes in submerged arc welding:

- d) Porosity formation in the seam and/or slag,**
- e) Hydrogen cracks**



d



e

ELECTRODE AND WELDING FLUX DRYING OVENS

Electrode Drying Ovens

Technical Specifications

MKF M

Capacity	5 kg - 75 Pcs. of Rod Electrodes
Outer Diameter	10 cm
Height	50 cm
Weight	2.5 kg
Product Code	8321010M00



Technical Specifications

MKF TE

Capacity	5 kg - 100 Pcs. of Rod Electrodes
Outer Diameter	16 cm
Max. Heating Degree	0 - 130 °C
Operating Power	200 Watt
Operating Voltage	220 - 240 Volt
Height	50 cm (56 cm with the holder)
Weight	5 kg
Input Current	1 A
Product Code	8321070M25

Technical Specifications

MKF 1YE

Capacity	5 kg - 100 Pcs. of Rod Electrodes
Outer Diameter	16 cm
Max. Heating Degree	60 - 200 °C
Operating Power	200 Watt
Operating Voltage	220 - 240 Volt
Height	60 cm (65 cm with the holder)
Weight	8 kg
Input Current	1 A
Product Code	8321010M25



Please contact us for our other models.

ELECTRODE AND WELDING FLUX DRYING OVENS

Electrode Drying Ovens



Technical Specifications

MKF 2YE

Capacity	10 kg - 200 Pcs. of Rod Electrodes
Outer Diameter	22 cm
Max. Heating Degree	60 - 200 °C
Operating Power	400 Watt
Operating Voltage	220 - 240 Volt
Height	60 cm (65 cm with the holder)
Weight	10 kg
Input Current	2 A
Product Code	8321040M25

Technical Specifications

MKF 4YE

Capacity	20 kg - 400 Pcs. of Rod Electrodes
Outer Diameter	25 cm
Max. Heating Degree	60 - 300 °C
Operating Power	400 Watt
Operating Voltage	220 - 240 Volt
Height	60 cm
Weight	20 kg
Input Current	2 A
Product Code	8321060M25



Technical Specifications

MKF 1KE

Capacity	5 kg - 100 Pcs. of Rod Electrodes
Max. Heating Degree	60 - 200 °C
Operating Power	400 Watt
Operating Voltage	220 - 240 Volt
Height	60 cm
Width	20 cm
Length	20 cm
Weight	8 kg
Input Current	2 A
Product Code	8321090M25



Please contact us for our other models.

ELECTRODE AND WELDING FLUX DRYING OVENS

Electrode Drying Ovens

Technical Specifications

MKF 2KE

Capacity	10 kg - 200 Pcs. of Rod Electrodes
Max. Heating Degree	60 - 200 °C
Operating Power	400 Watt
Operating Voltage	220 - 240 Volt
Height	56 cm
Width	30 cm
Length	30 cm
Weight	12 kg
Input Current	2 A
Product Code	8321100M25



Technical Specifications

MKF 4KE

Capacity	20 kg - 400 Pcs. of Rod Electrodes
Max. Heating Degree	60 - 300 °C
Operating Power	800 Watt
Operating Voltage	220 - 240 Volt
Height	68 cm
Width	35 cm
Length	35 cm
Weight	35 kg
Input Current	4 A
Product Code	8321120M25

Technical Specifications

MKF 6KE

Capacity	30 kg - 600 Pcs. of Rod Electrodes
Max. Heating Degree	60 - 300 °C
Operating Power	800 Watt
Operating Voltage	220 - 240 Volt
Height	68 cm
Width	40 cm
Length	40 cm
Weight	40 kg
Input Current	4 A
Product Code	8321130M25
Código do produto	8321010M25



Please contact us for our other models.

ELECTRODE AND WELDING FLUX DRYING OVENS

Electrode Drying Ovens



Technical Specifications

MKF 10E

Capacity	50 kg - 1000 Pcs. of Rod Electrodes
Max. Heating Degree	0 - 400 °C
Operating Power	3000 Watt
Operating Voltage	380 - 400 Volt
Height	79 cm (109 cm with the electrical panel)
Width	50 cm
Length	65 cm
Weight	40 kg
Input Current	14 A
Product Code	8322010M45

Technical Specifications

MKF 20E

Capacity	100 kg - 2000 Pcs. of Rod Electrodes
Max. Heating Degree	0 - 400 °C
Operating Power	4500 Watt
Operating Voltage	380 - 400 Volt
Height	102 cm (134 cm with the electrical panel)
Width	46 cm
Length	67 cm
Weight	90 kg
Input Current	14 A
Product Code	8322020M45



Technical Specifications

MKF 30E

Capacity	150 kg - 3000 Pcs. of Rod Electrodes
Max. Heating Degree	0 - 400 °C
Operating Power	4500 Watt
Operating Voltage	380 - 400 Volt
Height	113 cm (147 cm with the electrical panel)
Width	67 cm
Length	64 cm
Weight	105 kg
Input Current	21 A
Product Code	8322030M45



Please contact us for our other models.

ELECTRODE AND WELDING FLUX DRYING OVENS

Electrode Drying Ovens

Technical Specifications

MKF 50E

Capacity	250 kg - 5000 Pcs. of Rod Electrodes
Max. Heating Degree	0 - 400 °C
Operating Power	4500 Watt
Operating Voltage	380 - 400 Volt
Height	115 cm (150 cm with the electrical panel)
Width	67 cm
Length	77 cm
Weight	160 kg
Input Current	21 A
Product Code	8322040M45



Technical Specifications

MKF 2-30E

Capacity	300 kg - 6000 Pcs. of Rod Electrodes
Max. Heating Degree	0 - 400 °C
Operating Power	3000 + 3000 Watt
Operating Voltage	380 - 400 Volt
Height	140 cm (165 cm with the electrical panel)
Width	75 cm
Length	60 cm
Weight	225 kg
Input Current	28 A
Product Code	8322060M45

Welding Flux Drying Ovens

Technical Specifications

MKF 50T

Capacity	50 kg
Max. Heating Degree	0 - 400 °C
Operating Power	3000 Watt
Operating Voltage	380 - 400 Volt
Height	115 cm
Width	70 cm
Length	74 cm (94 cm with the electrical panel)
Weight	115 kg
Input Current	14 A
Product Code	8323010M45



Please contact us for our other models.

ELECTRODE AND WELDING FLUX DRYING OVENS

Welding Flux Drying Ovens



Technical Specifications

MKF 125T

Capacity	125 kg
Max. Heating Degree	0 - 400 °C
Operating Power	4500 Watt
Operating Voltage	380 - 400 Volt
Height	130 cm
Width	124 cm
Length	90 cm (110 cm with the electrical panel)
Weight	190 kg
Input Current	21 A
Product Code	8323020M45

Technical Specifications

MKF 2-125T

Capacity	125 + 125 kg
Max. Heating Degree	0 - 400 °C
Operating Power	3000 + 3000 Watt
Operating Voltage	380 - 400 Volt
Height	113 cm
Width	75 cm
Length	140 cm (180 cm with the electrical panel)
Weight	200 kg
Input Current	28 A
Product Code	8323060M45



Technical Specifications

MKF 250T

Capacity	250 kg
Max. Heating Degree	0 - 400 °C
Operating Power	7500 Watt
Operating Voltage	380 - 400 Volt
Height	120 cm
Width	140 cm (160 cm with the electrical panel)
Length	85 cm
Weight	230 kg
Input Current	28 A
Product Code	8323030M45



Please contact us for our other models.

ELECTRODE AND WELDING FLUX DRYING OVENS

Welding Flux Drying Ovens



Technical Specifications	MKF 2-250T
Capacity	250 + 250 kg
Max. Heating Degree	0 - 400 °C
Operating Power	4500 + 4500 Watt
Operating Voltage	380 - 400 Volt
Height	150 cm
Width	75 cm
Length	150 cm (190 cm with the electrical panel)
Weight	370 kg
Input Current	28 A
Product Code	8323070M45



Technical Specifications	MKF 2-350T
Capacity	350 + 350 kg
Max. Heating Degree	0 - 400 °C
Operating Power	4500 + 4500 Watt
Operating Voltage	380 - 400 Volt
Height	160 cm
Width	160 cm (180 cm with the electrical panel)
Length	80 cm
Weight	390 kg
Input Current	42 A
Product Code	8323040M45

Technical Specifications	MKF TE 50
Capacity	50 kg (Flux) + 50 kg (Electrode)
Max. Heating Degree	0 - 400 °C
Operating Power	6000 Watt
Operating Voltage	380 - 400 Volt
Height	72 cm (102 cm with the electrical panel)
Width	53 cm
Length	67 cm
Weight	180 kg
Input Current	14 A
Product Code	8324010M45



Please contact us for our other models.

Non-Stop Welding Since 1957

Magmaweld is a developer & manufacturer of Stick Electrodes, MIG/MAG & TIG Wires, Flux Cored Wires, Submerged-Arc Wires and Fluxes, Welding Machines, Fume Extractors, Welding Ancillary Products and Robotic Automation Systems since 1957 in Turkey. 95% of its sales program is manufactured by the two factories in Manisa/Turkey.



(+90) 444 93 53
magmaweld.com
info@magmaweld.com