



QUICK START

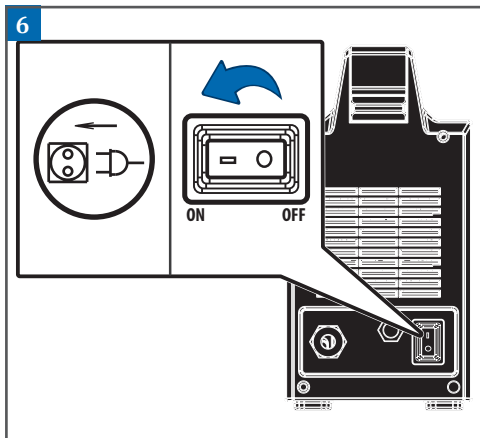
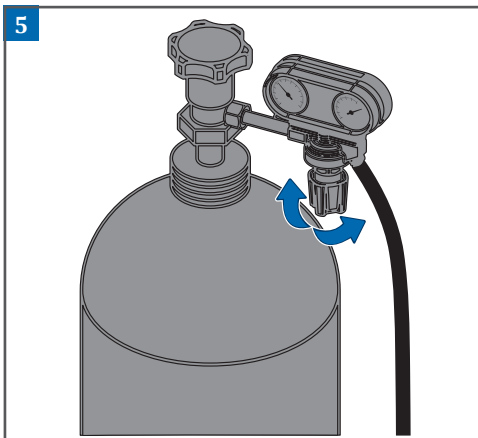
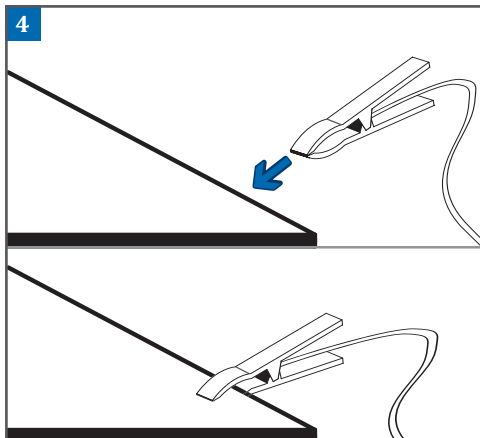
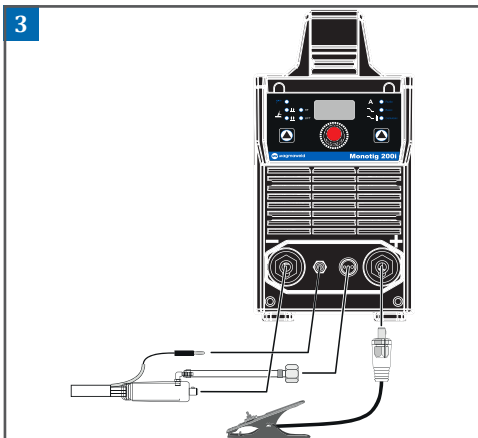
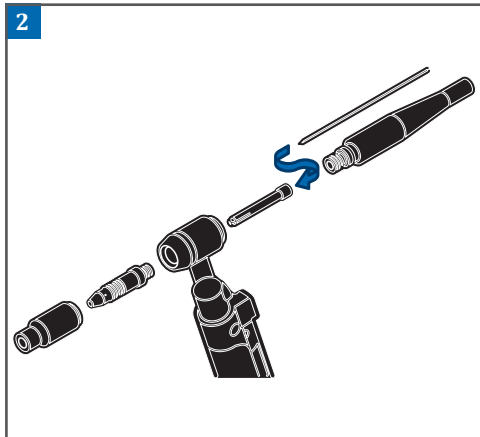
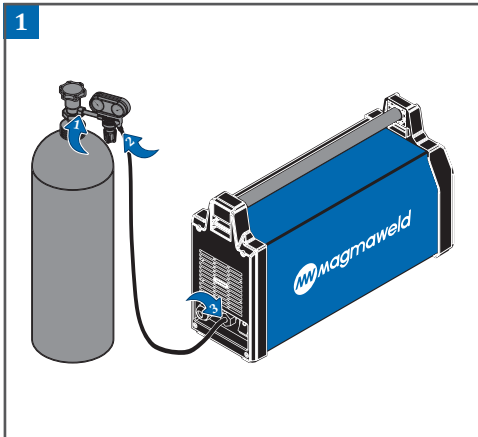
monoTIG Series



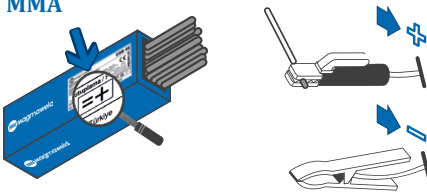
(+90) 444 93 53
magmaweld.com
info@magmaweld.com

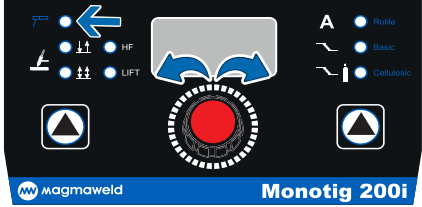
 (+90) 538 927 12 62





7 MMA

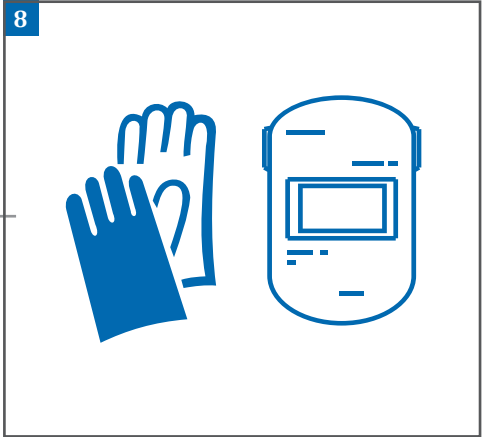




Control panel settings for MMA:

- HF: ON
- LIFT: ON
- A: Pulse (OFF), Basic (ON), Cellulose (OFF)

magmaweld **Monotig 200i**



9

**Warranty Form
Garanti Formu**



10

monoTIG 160i monoTIG 200i

